

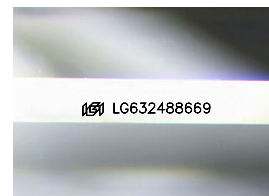
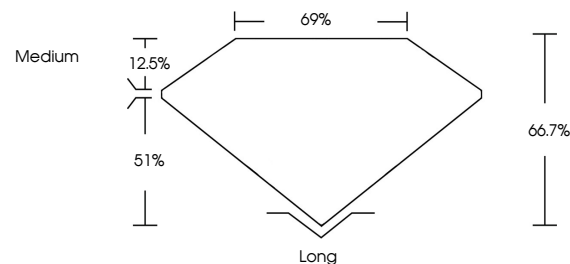


**ELECTRONIC COPY**

## LABORATORY GROWN DIAMOND REPORT

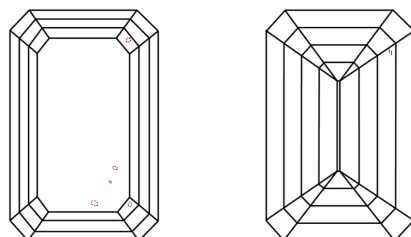
LG632488669  
Report verification at [lgi.org](https://lgi.org)

## PROPORTIONS



Sample Image Used

## CLARITY CHARACTERISTICS



### KEY TO SYMBOLS

Red symbols indicate internal characteristics.  
Green symbols indicate external characteristics.

## COLOR

D E F G H I J Faint Very Light Light

## CLARITY

IF	VVS <sup>1-2</sup>	VS <sup>1-2</sup>	SI <sup>1-2</sup>	I <sup>1-3</sup>
Internally Flawless	Very Very Slightly Included	Very Slightly Included	Slightly Included	Included



© IGI 2020, International Gemological Institute

FD - 10 20

## DIAMOND REPORT



April 29, 2024

IGI Report Number **LG632488669**Description **LABORATORY GROWN DIAMOND**

Shape and Cutting Style **EMERALD CUT**

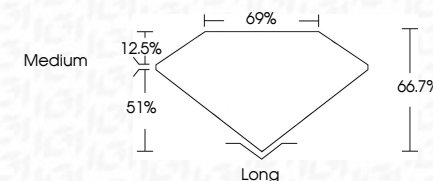
Measurements	8.70 X 6.00 X 4.00 MM
--------------	-----------------------

## GRADING RESULTS

Carat Weight **2.05 CARATS**

Color Grade H

Clarity Grade VS 1



### ADDITIONAL GRADING INFORMATION

Polish **EXCELLENT**Symmetry **EXCELLENT**Fluorescence **NONE**Inscription(s)  LG632488669

Comments: This Laboratory Grown Diamond was created by Chemical Vapor Deposition (CVD) growth process and may include post-growth treatment.  
Type IIa



April 29, 2024  
 IGI Report No LG632488669  
 EMERALD CITT

2.05 CARATS	H	VS 1	66.7%	69%	Medium	Long	EXCELLENT	EXCELLENT	NONE
2.05 CARATS	H	VS 1	66.7%	69%	Medium	Long	EXCELLENT	EXCELLENT	NONE

**Comments:**  
This Laboratory Grown Diamond was created by Chemical Vapor Deposition (CVD) growth process and may include post-growth treatment.