



**ELECTRONIC COPY**

**LABORATORY GROWN DIAMOND REPORT**

May 1, 2024  
IGI Report Number **LG632497085**  
Description **LABORATORY GROWN DIAMOND**  
Shape and Cutting Style **PRINCESS CUT**  
Measurements **7.60 X 7.40 X 5.29 MM**

**GRADING RESULTS**

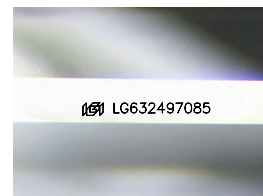
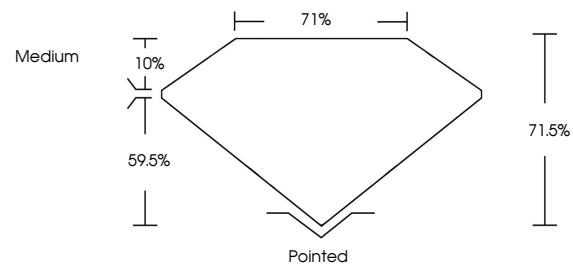
Carat Weight **2.51 CARATS**  
Color Grade **F**  
Clarity Grade **VS 1**

**ADDITIONAL GRADING INFORMATION**

Polish **EXCELLENT**  
Symmetry **EXCELLENT**  
Fluorescence **NONE**  
Inscription(s) **IGI LG632497085**

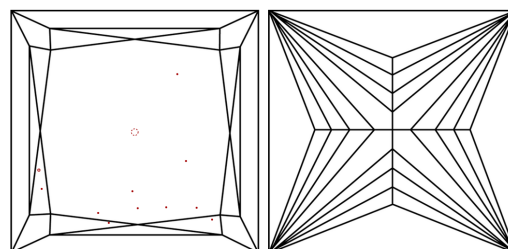
Comments: This Laboratory Grown Diamond was created by Chemical Vapor Deposition (CVD) growth process and may include post-growth treatment. Type IIa

**PROPORTIONS**



Sample Image Used

**CLARITY CHARACTERISTICS**



**KEY TO SYMBOLS**

Red symbols indicate internal characteristics.  
Green symbols indicate external characteristics.

**COLOR**

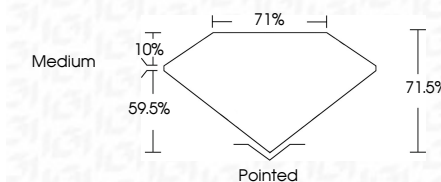
D E F G H I J Faint Very Light Light

**CLARITY**

IF	VS <sup>1-2</sup>	VS <sup>1-2</sup>	SI <sup>1-2</sup>	I <sup>1-3</sup>
Internally Flawless	Very Very Slightly Included	Very Slightly Included	Slightly Included	Included



May 1, 2024  
IGI Report Number **LG632497085**  
Description **LABORATORY GROWN DIAMOND**  
Shape and Cutting Style **PRINCESS CUT**  
Measurements **7.60 X 7.40 X 5.29 MM**  
**GRADING RESULTS**  
Carat Weight **2.51 CARATS**  
Color Grade **F**  
Clarity Grade **VS 1**



**ADDITIONAL GRADING INFORMATION**

Polish **EXCELLENT**  
Symmetry **EXCELLENT**  
Fluorescence **NONE**  
Inscription(s) **IGI LG632497085**  
Comments: This Laboratory Grown Diamond was created by Chemical Vapor Deposition (CVD) growth process and may include post-growth treatment. Type IIa



**IGI**

May 1, 2024  
IGI Report No. **LG632497085**  
**PRINCESS CUT**  
**7.60 X 7.40 X 5.29 MM**  
Carat Weight **2.51 CARATS**  
Color Grade **F**  
Clarity Grade **VS 1**  
Depth **71.5%**  
Table **71%**  
Girdle **Medium**  
Culet **Pointed**  
Polish **EXCELLENT**  
Symmetry **EXCELLENT**  
Fluorescence **NONE**  
Inscription(s) **IGI LG632497085**  
Comments: This Laboratory Grown Diamond was created by Chemical Vapor Deposition (CVD) growth process and may include post-growth treatment. Type IIa