



ELECTRONIC COPY

LG632498912
Report verification at igi.org



May 3, 2024

IGI Report Number LG632498912

Description LABORATORY GROWN DIAMOND

Shape and Cutting Style ROUND BRILLIANT

Measurements 9.11 - 9.16 X 5.58 MM

GRADING RESULTS

Carat Weight 2.89 CARATS

Color Grade F

Clarity Grade VS 1

Cut Grade IDEAL

May 3, 2024
IGI Report Number LG632498912
Description LABORATORY GROWN DIAMOND
Shape and Cutting Style ROUND BRILLIANT
Measurements 9.11 - 9.16 X 5.58 MM

GRADING RESULTS

Carat Weight 2.89 CARATS

Color Grade F

Clarity Grade VS 1

Cut Grade IDEAL

ADDITIONAL GRADING INFORMATION

Polish EXCELLENT

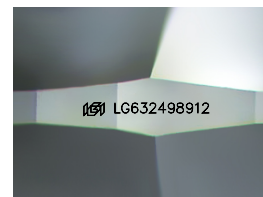
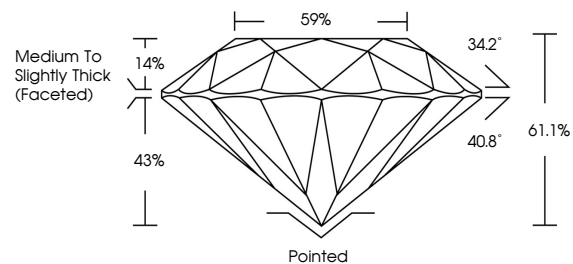
Symmetry EXCELLENT

Fluorescence NONE

Inscription(s) IGI LG632498912

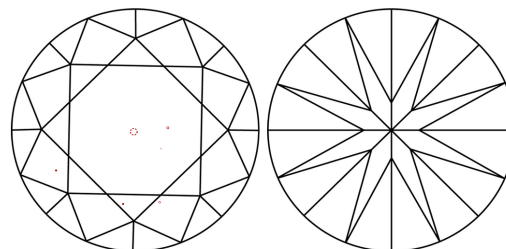
Comments: This Laboratory Grown Diamond was created by Chemical Vapor Deposition (CVD) growth process and may include post-growth treatment. Type IIa

PROPORTIONS



Sample Image Used

CLARITY CHARACTERISTICS



KEY TO SYMBOLS

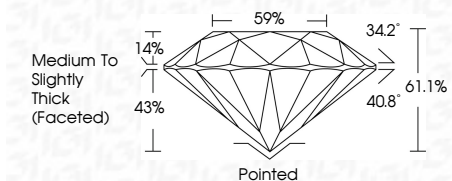
Red symbols indicate internal characteristics.
Green symbols indicate external characteristics.

COLOR

D E F G H I J Faint Very Light Light

CLARITY

Table with columns for clarity grades: IF, VS 1-2, VS 1-2, SI 1-2, I 1-3 and their corresponding descriptions: Internally Flawless, Very Very Slightly Included, Very Slightly Included, Slightly Included, Included.



ADDITIONAL GRADING INFORMATION

Polish EXCELLENT

Symmetry EXCELLENT

Fluorescence NONE

Inscription(s) IGI LG632498912

Comments: This Laboratory Grown Diamond was created by Chemical Vapor Deposition (CVD) growth process and may include post-growth treatment. Type IIa



IGI



Summary table containing report details: May 3, 2024, IGI Report No. LG632498912, ROUND BRILLIANT, 9.11 - 9.16 X 5.58 MM, 2.89 CARATS, F, VS 1, IDEAL, 61.1%, 59%, Medium To Slightly Thick (Faceted), Pointed, EXCELLENT, EXCELLENT, NONE, IGI LG632498912. Includes a comment about CVD growth process and post-growth treatment.