



ELECTRONIC COPY

LG633400107
Report verification at igi.org



May 4, 2024

IGI Report Number **LG633400107**

Description **LABORATORY GROWN DIAMOND**

Shape and Cutting Style **CUSHION BRILLIANT**

Measurements **7.36 X 5.95 X 4.12 MM**

GRADING RESULTS

Carat Weight **1.54 CARAT**

Color Grade **D**

Clarity Grade **VVS 2**

LABORATORY GROWN DIAMOND REPORT

May 4, 2024

IGI Report Number **LG633400107**

Description **LABORATORY GROWN DIAMOND**

Shape and Cutting Style **CUSHION BRILLIANT**

Measurements **7.36 X 5.95 X 4.12 MM**

GRADING RESULTS

Carat Weight **1.54 CARAT**

Color Grade **D**

Clarity Grade **VVS 2**

ADDITIONAL GRADING INFORMATION

Polish **EXCELLENT**

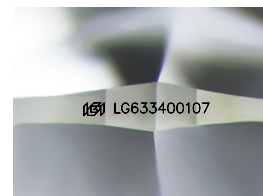
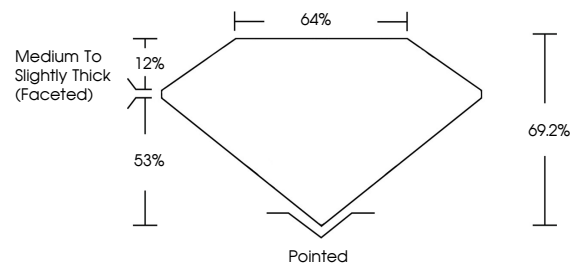
Symmetry **EXCELLENT**

Fluorescence **NONE**

Inscription(s) **IGI LG633400107**

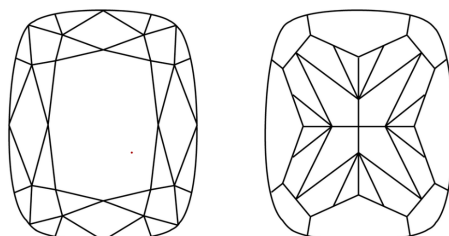
Comments: This Laboratory Grown Diamond was created by Chemical Vapor Deposition (CVD) growth process and may include post-growth treatment. Type IIa

PROPORTIONS



Sample Image Used

CLARITY CHARACTERISTICS



KEY TO SYMBOLS

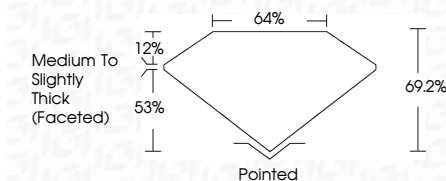
Red symbols indicate internal characteristics.
Green symbols indicate external characteristics.

COLOR

D E F G H I J Faint Very Light Light

CLARITY

IF	VS ¹⁻²	VS ¹⁻²	SI ¹⁻²	I ¹⁻³
Internally Flawless	Very Very Slightly Included	Very Slightly Included	Slightly Included	Included



ADDITIONAL GRADING INFORMATION

Polish **EXCELLENT**

Symmetry **EXCELLENT**

Fluorescence **NONE**

Inscription(s) **IGI LG633400107**

Comments: This Laboratory Grown Diamond was created by Chemical Vapor Deposition (CVD) growth process and may include post-growth treatment. Type IIa



IGI



May 4, 2024
IGI Report No LG633400107
CUSHION BRILLIANT
7.36 X 5.95 X 4.12 MM
Carat Weight **1.54 CARAT**
Color Grade **D**
Clarity Grade **VVS 2**
Depth **69.2%**
Table **64%**
Girdle **Medium to Slightly Thick (Faceted)**
Culet **Pointed**
Polish **EXCELLENT**
Symmetry **EXCELLENT**
Fluorescence **NONE**
Inscription(s) **IGI LG633400107**

Comments: This Laboratory Grown Diamond was created by Chemical Vapor Deposition (CVD) growth process and may include post-growth treatment. Type IIa