



ELECTRONIC COPY

LG633401447
Report verification at igi.org



May 4, 2024

IGI Report Number **LG633401447**

Description **LABORATORY GROWN DIAMOND**

Shape and Cutting Style **ROUND BRILLIANT**

Measurements **9.70 - 9.77 X 6.03 MM**

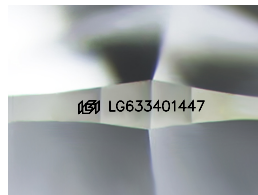
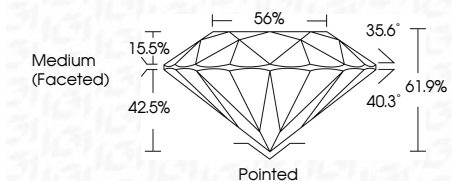
GRADING RESULTS

Carat Weight **3.53 CARATS**

Color Grade **F**

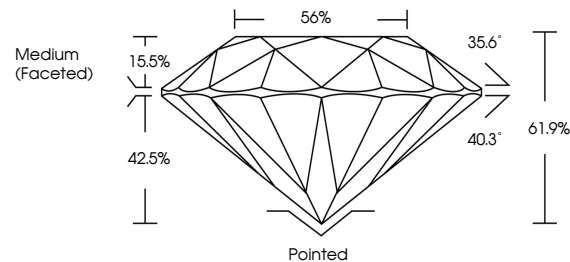
Clarity Grade **INTERNALLY FLAWLESS**

Cut Grade **IDEAL**

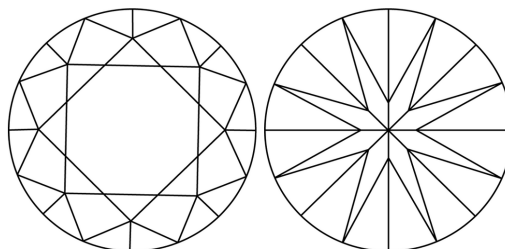


Sample Image Used

PROPORTIONS



CLARITY CHARACTERISTICS



KEY TO SYMBOLS

Red symbols indicate internal characteristics.
Green symbols indicate external characteristics.

COLOR

D E F G H I J Faint Very Light Light

CLARITY

IF	VS ¹⁻²	VS ¹⁻²	SI ¹⁻²	I ¹⁻³
Internally Flawless	Very Very Slightly Included	Very Slightly Included	Slightly Included	Included

ADDITIONAL GRADING INFORMATION

Polish **EXCELLENT**

Symmetry **EXCELLENT**

Fluorescence **NONE**

Inscription(s) **IGI LG633401447**

Comments: As Grown - No indication of post-growth treatment.

This Laboratory Grown Diamond was created by High Pressure High Temperature (HPHT) growth process.

Type II



IGI



May 4, 2024	IGI Report No LG633401447	3.53 CARATS	F	Pointed
ROUND BRILLIANT	9.70 - 9.77 X 6.03 MM	Color Grade	IDEAL	EXCELLENT
		Clarity Grade	61.9%	EXCELLENT
		Depth	42.5%	NONE
		Table	56%	None
		Girdle	Medium (Faceted)	Inscriptions(s)
		Culet		IGI LG633401447
		Polish		
		Symmetry		
		Fluorescence		
		Comments:		
		As Grown - No indication of post-growth treatment.		
		This Laboratory Grown Diamond was created by High Pressure High Temperature (HPHT) growth process.		
		Type II		