



ELECTRONIC COPY

LG633402139
Report verification at igi.org

LABORATORY GROWN DIAMOND REPORT

May 13, 2024
IGI Report Number **LG633402139**
Description **LABORATORY GROWN DIAMOND**
Shape and Cutting Style **EMERALD CUT**
Measurements **8.78 X 6.09 X 4.12 MM**

GRADING RESULTS

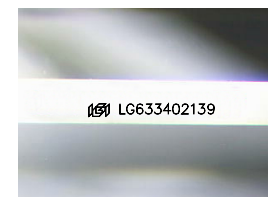
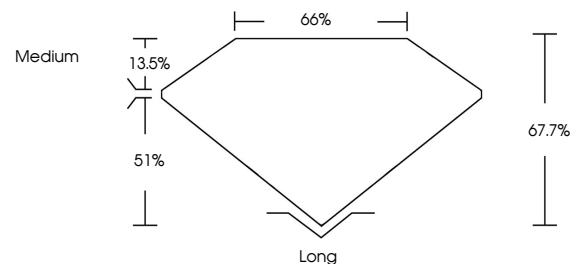
Carat Weight **2.17 CARATS**
Color Grade **H**
Clarity Grade **VVS 2**

ADDITIONAL GRADING INFORMATION

Polish **EXCELLENT**
Symmetry **EXCELLENT**
Fluorescence **NONE**
Inscription(s) **IGI LG633402139**

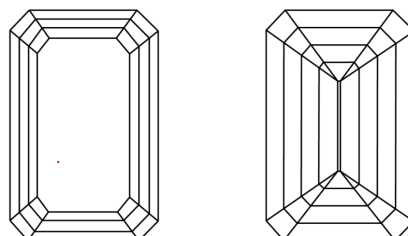
Comments: This Laboratory Grown Diamond was created by Chemical Vapor Deposition (CVD) growth process and may include post-growth treatment. Type IIa

PROPORTIONS



Sample Image Used

CLARITY CHARACTERISTICS



KEY TO SYMBOLS

Red symbols indicate internal characteristics.
Green symbols indicate external characteristics.

COLOR

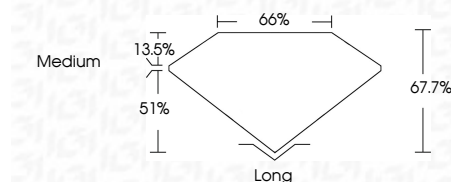
D E F G H I J Faint Very Light Light

CLARITY

IF	VS ¹⁻²	VS ¹⁻²	SI ¹⁻²	I ¹⁻³
Internally Flawless	Very Very Slightly Included	Very Slightly Included	Slightly Included	Included



May 13, 2024
IGI Report Number **LG633402139**
Description **LABORATORY GROWN DIAMOND**
Shape and Cutting Style **EMERALD CUT**
Measurements **8.78 X 6.09 X 4.12 MM**
GRADING RESULTS
Carat Weight **2.17 CARATS**
Color Grade **H**
Clarity Grade **VVS 2**



ADDITIONAL GRADING INFORMATION

Polish **EXCELLENT**
Symmetry **EXCELLENT**
Fluorescence **NONE**
Inscription(s) **IGI LG633402139**
Comments: This Laboratory Grown Diamond was created by Chemical Vapor Deposition (CVD) growth process and may include post-growth treatment. Type IIa



IGI

May 13, 2024
IGI Report No. LG633402139
EMERALD CUT
8.78 X 6.09 X 4.12 MM
Carat Weight **2.17 CARATS**
Color Grade **H**
Clarity Grade **VVS 2**
Depth **51%**
Table **13.5%**
Girdle **Medium**
Culet **Long**
Polish **EXCELLENT**
Symmetry **EXCELLENT**
Fluorescence **NONE**
Inscription(s) **IGI LG633402139**

Comments: This Laboratory Grown Diamond was created by Chemical Vapor Deposition (CVD) growth process and may include post-growth treatment. Type IIa