



**ELECTRONIC COPY**

LG633403579  
Report verification at igi.org



May 9, 2024

IGI Report Number **LG633403579**

Description **LABORATORY GROWN DIAMOND**

Shape and Cutting Style **CUSHION BRILLIANT**

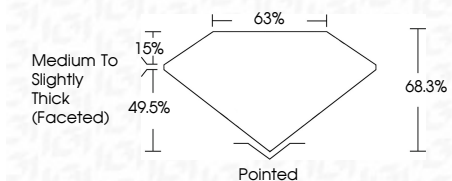
Measurements **7.14 X 6.53 X 4.46 MM**

**GRADING RESULTS**

Carat Weight **1.61 CARAT**

Color Grade **G**

Clarity Grade **VVS 2**



**ADDITIONAL GRADING INFORMATION**

Polish **EXCELLENT**

Symmetry **EXCELLENT**

Fluorescence **NONE**

Inscription(s) **IGI LG633403579**

Comments: This Laboratory Grown Diamond was created by Chemical Vapor Deposition (CVD) growth process and may include post-growth treatment. Type IIa



**IGI**

|                          |                              |                    |                      |              |              |               |                                    |               |                 |                     |                       |   |
|--------------------------|------------------------------|--------------------|----------------------|--------------|--------------|---------------|------------------------------------|---------------|-----------------|---------------------|-----------------------|---|
| May 9, 2024              | IGI Report No LG633403579    | 1.61 CARAT         | G                    | VVS 2        | 68.3%        | 63%           | Medium to Slightly Thick (Faceted) | Pointed       | EXCELLENT       | EXCELLENT           | NONE                  | IGI LG633403579   |
| <b>CUSHION BRILLIANT</b> | <b>7.14 X 6.53 X 4.46 MM</b> | <b>Color Grade</b> | <b>Clarity Grade</b> | <b>Table</b> | <b>Depth</b> | <b>Girdle</b> | <b>Culet</b>                       | <b>Polish</b> | <b>Symmetry</b> | <b>Fluorescence</b> | <b>Inscription(s)</b> | <b>Comments:</b><br>This Laboratory Grown Diamond was created by Chemical Vapor Deposition (CVD) growth process and may include post-growth treatment. Type IIa |

May 9, 2024  
IGI Report Number **LG633403579**  
Description **LABORATORY GROWN DIAMOND**  
Shape and Cutting Style **CUSHION BRILLIANT**  
Measurements **7.14 X 6.53 X 4.46 MM**

**GRADING RESULTS**

Carat Weight **1.61 CARAT**

Color Grade **G**

Clarity Grade **VVS 2**

**ADDITIONAL GRADING INFORMATION**

Polish **EXCELLENT**

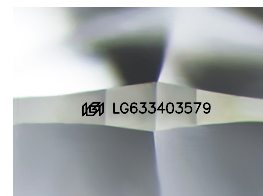
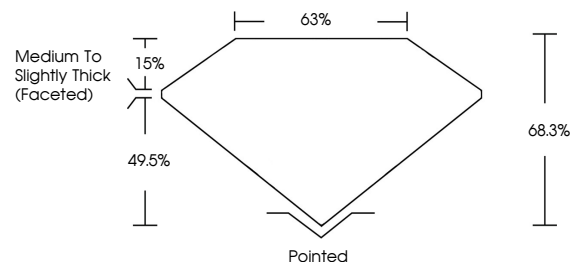
Symmetry **EXCELLENT**

Fluorescence **NONE**

Inscription(s) **IGI LG633403579**

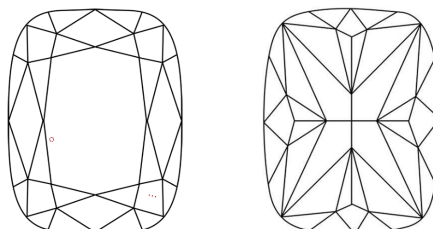
Comments: This Laboratory Grown Diamond was created by Chemical Vapor Deposition (CVD) growth process and may include post-growth treatment. Type IIa

**PROPORTIONS**



Sample Image Used

**CLARITY CHARACTERISTICS**



**KEY TO SYMBOLS**

Red symbols indicate internal characteristics.  
Green symbols indicate external characteristics.

**COLOR**

D E F G H I J Faint Very Light Light

**CLARITY**

|                     |                             |                        |                   |                  |
|---------------------|-----------------------------|------------------------|-------------------|------------------|
| IF                  | VS <sup>1-2</sup>           | VS <sup>1-2</sup>      | SI <sup>1-2</sup> | I <sup>1-3</sup> |
| Internally Flawless | Very Very Slightly Included | Very Slightly Included | Slightly Included | Included         |

