



ELECTRONIC COPY

LG633403859
Report verification at igi.org



May 4, 2024
IGI Report Number: LG633403859
Description: LABORATORY GROWN DIAMOND
Shape and Cutting Style: ROUND BRILLIANT
Measurements: 6.49 - 6.53 X 4.09 MM
GRADING RESULTS
Carat Weight: 1.09 CARAT
Color Grade: E
Clarity Grade: VS 1
Cut Grade: EXCELLENT

May 4, 2024
IGI Report Number: LG633403859
Description: LABORATORY GROWN DIAMOND
Shape and Cutting Style: ROUND BRILLIANT
Measurements: 6.49 - 6.53 X 4.09 MM

GRADING RESULTS

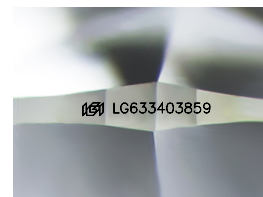
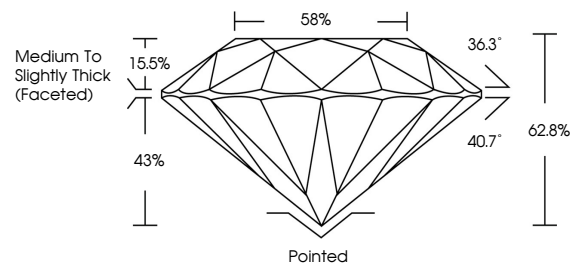
Carat Weight: 1.09 CARAT
Color Grade: E
Clarity Grade: VS 1
Cut Grade: EXCELLENT

ADDITIONAL GRADING INFORMATION

Polish: EXCELLENT
Symmetry: EXCELLENT
Fluorescence: NONE
Inscription(s): IGI LG633403859

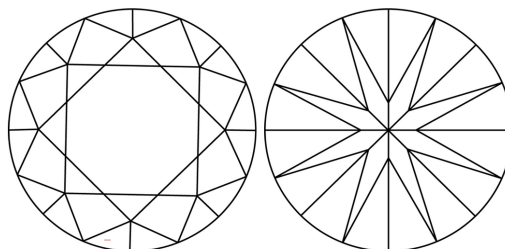
Comments: This Laboratory Grown Diamond was created by Chemical Vapor Deposition (CVD) growth process and may include post-growth treatment. Type IIa

PROPORTIONS



Sample Image Used

CLARITY CHARACTERISTICS



KEY TO SYMBOLS

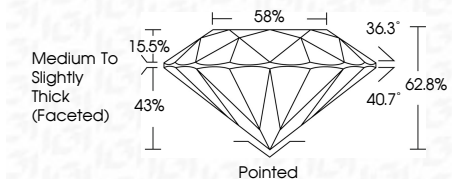
Red symbols indicate internal characteristics.
Green symbols indicate external characteristics.

COLOR

D E F G H I J Faint Very Light Light

CLARITY

Table with columns for Clarity (IF, VVS 1-2, VS 1-2, SI 1-2, I 1-3) and descriptions (Internally Flawless, Very Very Slightly Included, Very Slightly Included, Slightly Included, Included)



ADDITIONAL GRADING INFORMATION

Polish: EXCELLENT
Symmetry: EXCELLENT
Fluorescence: NONE
Inscription(s): IGI LG633403859
Comments: This Laboratory Grown Diamond was created by Chemical Vapor Deposition (CVD) growth process and may include post-growth treatment. Type IIa



IGI



May 4, 2024
IGI Report No LG633403859
ROUND BRILLIANT
6.49 - 6.53 X 4.09 MM
1.09 CARAT
E
VS 1
EXCELLENT
62.8%
58%
Medium To Slightly Thick (Faceted)
Pointed
EXCELLENT
EXCELLENT
NONE
IGI LG633403859
Comments: This Laboratory Grown Diamond was created by Chemical Vapor Deposition (CVD) growth process and may include post-growth treatment. Type IIa