



ELECTRONIC COPY

LG633404407
Report verification at igi.org



May 8, 2024

IGI Report Number **LG633404407**

Description **LABORATORY GROWN DIAMOND**

Shape and Cutting Style **ROUND BRILLIANT**

Measurements **8.02 - 8.04 X 4.89 MM**

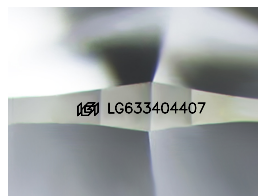
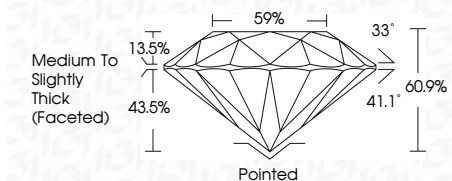
GRADING RESULTS

Carat Weight **1.93 CARAT**

Color Grade **F**

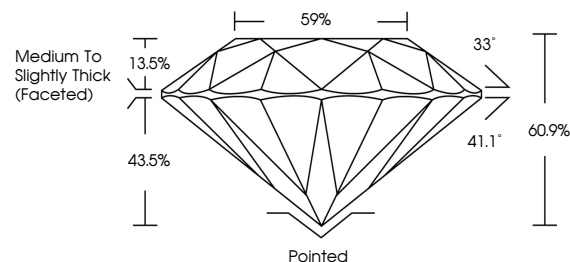
Clarity Grade **VS 1**

Cut Grade **IDEAL**

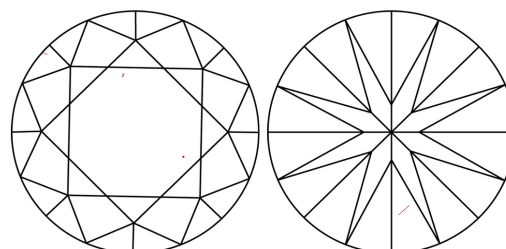


Sample Image Used

PROPORTIONS



CLARITY CHARACTERISTICS



KEY TO SYMBOLS

Red symbols indicate internal characteristics.
Green symbols indicate external characteristics.

COLOR

D E F G H I J Faint Very Light Light

CLARITY

IF	VS ¹⁻²	VS ¹⁻²	SI ¹⁻²	I ¹⁻³
Internally Flawless	Very Very Slightly Included	Very Slightly Included	Slightly Included	Included

ADDITIONAL GRADING INFORMATION

Polish **EXCELLENT**

Symmetry **EXCELLENT**

Fluorescence **NONE**

Inscription(s) **IGI LG633404407**

Comments: This Laboratory Grown Diamond was created by Chemical Vapor Deposition (CVD) growth process and may include post-growth treatment. Type IIa



IGI

May 8, 2024
IGI Report No LG633404407
ROUND BRILLIANT

8.02 - 8.04 X 4.89 MM

1.93 CARAT
F

VS 1
IDEAL

60.9%
59%

Medium To Slightly Thick (Faceted)

Pointed
EXCELLENT
EXCELLENT

NONE
NONE

IGI LG633404407

Comments: This Laboratory Grown Diamond was created by Chemical Vapor Deposition (CVD) growth process and may include post-growth treatment. Type IIa

