



**ELECTRONIC COPY**

LG633405722  
Report verification at igi.org



May 8, 2024

IGI Report Number **LG633405722**

Description **LABORATORY GROWN DIAMOND**

Shape and Cutting Style **ROUND BRILLIANT**

Measurements **8.42 - 8.47 X 5.24 MM**

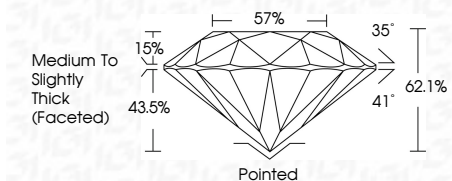
**GRADING RESULTS**

Carat Weight **2.29 CARATS**

Color Grade **E**

Clarity Grade **VS 1**

Cut Grade **IDEAL**



**ADDITIONAL GRADING INFORMATION**

Polish **EXCELLENT**

Symmetry **EXCELLENT**

Fluorescence **NONE**

Inscription(s) **IGI LG633405722**

Comments: HEARTS & ARROWS  
This Laboratory Grown Diamond was created by Chemical Vapor Deposition (CVD) growth process and may include post-growth treatment.  
Type IIa



**IGI**

May 8, 2024	IGI Report No LG633405722	2.29 CARATS	E	VS 1	IDEAL	62.1%	35°	Pointed	EXCELLENT	EXCELLENT	NONE	IGI LG633405722
ROUND BRILLIANT	8.42 - 8.47 X 5.24 MM	Color Grade	Clarity Grade	Depth	Table	Grade	Medium To Slightly Thick (Faceted)	Polish	Symmetry	Fluorescence	Inscription(s)	Comments: HEARTS & ARROWS This Laboratory Grown Diamond was created by Chemical Vapor Deposition (CVD) growth process and may include post-growth treatment. Type IIa

May 8, 2024

IGI Report No LG633405722

ROUND BRILLIANT

8.42 - 8.47 X 5.24 MM

Color Grade

Clarity Grade

Depth

Table

Grade

Medium To Slightly Thick (Faceted)

Pointed

EXCELLENT

EXCELLENT

NONE

IGI LG633405722

Comments: HEARTS & ARROWS

This Laboratory Grown Diamond was

created by Chemical Vapor Deposition

(CVD) growth process and may include

post-growth treatment.

Type IIa

May 8, 2024  
IGI Report Number **LG633405722**  
Description **LABORATORY GROWN DIAMOND**  
Shape and Cutting Style **ROUND BRILLIANT**  
Measurements **8.42 - 8.47 X 5.24 MM**

**GRADING RESULTS**

Carat Weight **2.29 CARATS**

Color Grade **E**

Clarity Grade **VS 1**

Cut Grade **IDEAL**

**ADDITIONAL GRADING INFORMATION**

Polish **EXCELLENT**

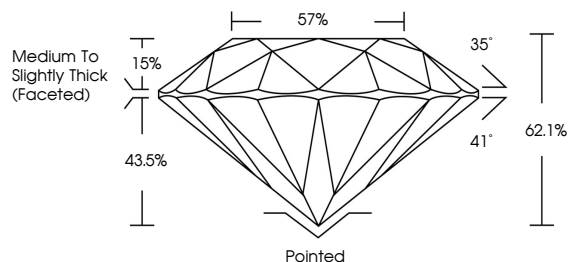
Symmetry **EXCELLENT**

Fluorescence **NONE**

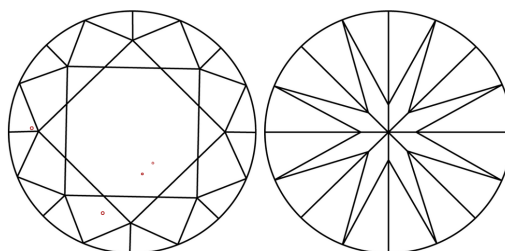
Inscription(s) **IGI LG633405722**

Comments: HEARTS & ARROWS  
This Laboratory Grown Diamond was created by Chemical Vapor Deposition (CVD) growth process and may include post-growth treatment.  
Type IIa

**PROPORTIONS**

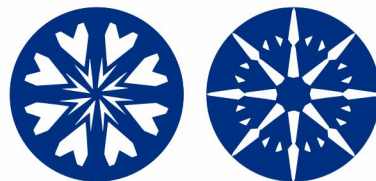


**CLARITY CHARACTERISTICS**

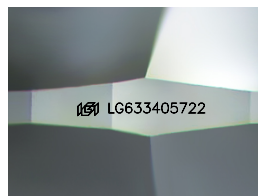


**KEY TO SYMBOLS**

Red symbols indicate internal characteristics.  
Green symbols indicate external characteristics.



www.igi.org



Sample Image Used

**COLOR**

D E F G H I J Faint Very Light Light

**CLARITY**

IF	VS <sup>1-2</sup>	VS <sup>1-2</sup>	SI <sup>1-2</sup>	I <sup>1-3</sup>
Internally Flawless	Very Very Slightly Included	Very Slightly Included	Slightly Included	Included