



ELECTRONIC COPY

LG633405735
Report verification at igi.org



May 9, 2024

IGI Report Number LG633405735

Description LABORATORY GROWN DIAMOND

Shape and Cutting Style ROUND BRILLIANT

Measurements 8.40 - 8.44 X 5.10 MM

GRADING RESULTS

Carat Weight 2.22 CARATS

Color Grade G

Clarity Grade VS 1

Cut Grade IDEAL

May 9, 2024
IGI Report Number LG633405735
Description LABORATORY GROWN DIAMOND
Shape and Cutting Style ROUND BRILLIANT
Measurements 8.40 - 8.44 X 5.10 MM

GRADING RESULTS

Carat Weight 2.22 CARATS

Color Grade G

Clarity Grade VS 1

Cut Grade IDEAL

ADDITIONAL GRADING INFORMATION

Polish EXCELLENT

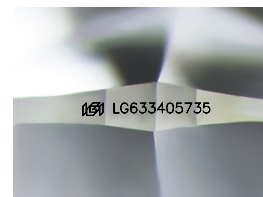
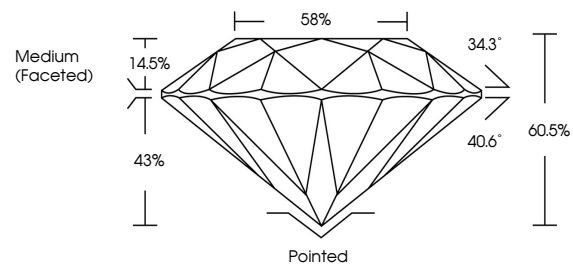
Symmetry EXCELLENT

Fluorescence NONE

Inscription(s) IGI LG633405735

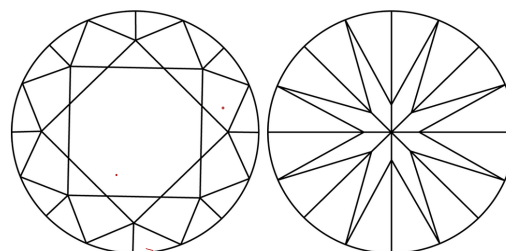
Comments: HEARTS & ARROWS
This Laboratory Grown Diamond was created by Chemical Vapor Deposition (CVD) growth process and may include post-growth treatment.
Type IIa

PROPORTIONS



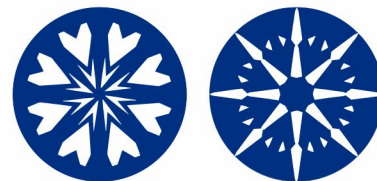
Sample Image Used

CLARITY CHARACTERISTICS



KEY TO SYMBOLS

Red symbols indicate internal characteristics.
Green symbols indicate external characteristics.

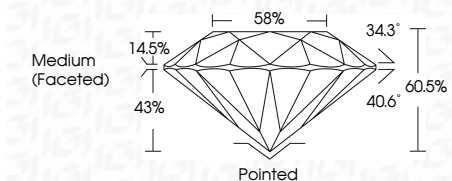


COLOR

D E F G H I J Faint Very Light Light

CLARITY

IF VS 1-2 VS 1-2 SI 1-2 I 1-3
Internally Flawless Very Very Slightly Included Very Slightly Included Slightly Included Included



ADDITIONAL GRADING INFORMATION

Polish EXCELLENT

Symmetry EXCELLENT

Fluorescence NONE

Inscription(s) IGI LG633405735

Comments: HEARTS & ARROWS
This Laboratory Grown Diamond was created by Chemical Vapor Deposition (CVD) growth process and may include post-growth treatment.
Type IIa



IGI

Summary table of report details: May 9, 2024, IGI Report No LG633405735, ROUND BRILLIANT, 8.40 - 8.44 X 5.10 MM, 2.22 CARATS, G, VS 1, IDEAL, 60.5%, 58%, Medium (Faceted), Hearts & Arrows, EXCELLENT, EXCELLENT, NONE, IGI LG633405735.