



ELECTRONIC COPY

LG633405791
Report verification at igi.org



May 8, 2024

IGI Report Number LG633405791

Description LABORATORY GROWN DIAMOND

Shape and Cutting Style ROUND BRILLIANT

Measurements 7.37 - 7.42 X 4.64 MM

GRADING RESULTS

Carat Weight 1.56 CARAT

Color Grade D

Clarity Grade VVS 2

Cut Grade EXCELLENT

May 8, 2024

IGI Report Number LG633405791

Description LABORATORY GROWN DIAMOND

Shape and Cutting Style ROUND BRILLIANT

Measurements 7.37 - 7.42 X 4.64 MM

GRADING RESULTS

Carat Weight 1.56 CARAT

Color Grade D

Clarity Grade VVS 2

Cut Grade EXCELLENT

ADDITIONAL GRADING INFORMATION

Polish EXCELLENT

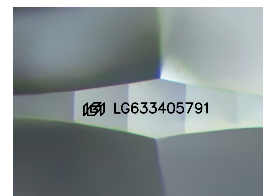
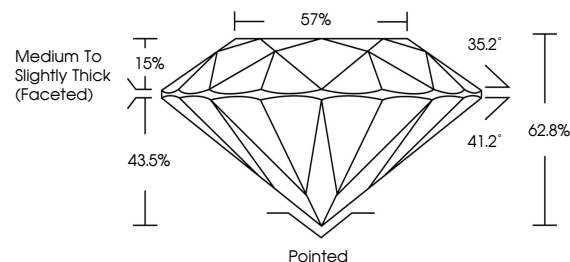
Symmetry EXCELLENT

Fluorescence NONE

Inscription(s) IGI LG633405791

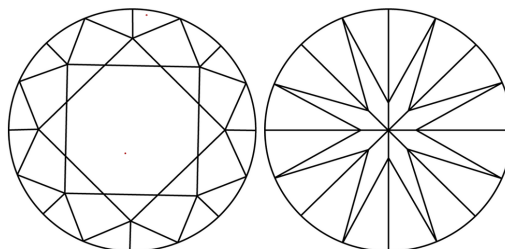
Comments: This Laboratory Grown Diamond was created by Chemical Vapor Deposition (CVD) growth process and may include post-growth treatment. Type IIa

PROPORTIONS



Sample Image Used

CLARITY CHARACTERISTICS



KEY TO SYMBOLS

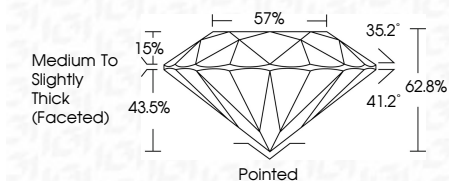
Red symbols indicate internal characteristics. Green symbols indicate external characteristics.

COLOR

D E F G H I J Faint Very Light Light

CLARITY

Table with columns for Clarity Grades (IF, VVS 1-2, VS 1-2, SI 1-2, I 1-3) and descriptions (Internally Flawless, Very Very Slightly Included, Very Slightly Included, Slightly Included, Included).



ADDITIONAL GRADING INFORMATION

Polish EXCELLENT

Symmetry EXCELLENT

Fluorescence NONE

Inscription(s) IGI LG633405791

Comments: This Laboratory Grown Diamond was created by Chemical Vapor Deposition (CVD) growth process and may include post-growth treatment. Type IIa



IGI



Summary table of report details: May 8, 2024, IGI Report No LG633405791, ROUND BRILLIANT, 7.37 - 7.42 X 4.64 MM, 1.56 CARAT, D, VVS 2, EXCELLENT, 62.8%, 57%, Medium To Slightly Thick (Faceted), Pointed, EXCELLENT, EXCELLENT, NONE, IGI LG633405791.

Comments: This Laboratory Grown Diamond was created by Chemical Vapor Deposition (CVD) growth process and may include post-growth treatment. Type IIa