



ELECTRONIC COPY

LG633406777
Report verification at igi.org



May 3, 2024

IGI Report Number **LG633406777**

Description **LABORATORY GROWN DIAMOND**

Shape and Cutting Style **ROUND BRILLIANT**

Measurements **8.26 - 8.28 X 5.03 MM**

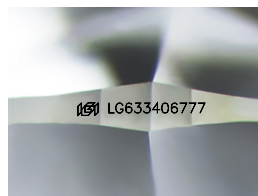
GRADING RESULTS

Carat Weight **2.10 CARATS**

Color Grade **F**

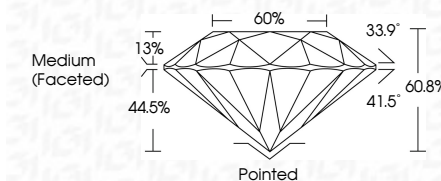
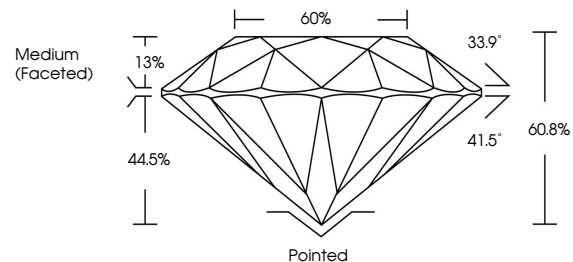
Clarity Grade **VS 2**

Cut Grade **EXCELLENT**



Sample Image Used

PROPORTIONS



ADDITIONAL GRADING INFORMATION

Polish **EXCELLENT**

Symmetry **EXCELLENT**

Fluorescence **NONE**

Inscription(s) **IGI LG633406777**

Comments: This Laboratory Grown Diamond was created by Chemical Vapor Deposition (CVD) growth process and may include post-growth treatment. Type IIa



IGI

COLOR

D E F G H I J Faint Very Light Light

CLARITY

IF VS¹⁻² VS¹⁻² SI¹⁻² I¹⁻³

Internally Flawless Very Very Slightly Included Very Slightly Included Slightly Included Included



May 3, 2024	IGI Report No LG633406777	2.10 CARATS	F	VS 2	EXCELLENT	60.8%	60%	Medium (Faceted)	Pointed	EXCELLENT	EXCELLENT	NONE	IGI LG633406777
IGI Report No LG633406777	ROUND BRILLIANT	8.26 - 8.28 X 5.03 MM	Color Grade	Clarity Grade	Cut Grade	Depth	Table	Girdle	Culet	Polish	Symmetry	Fluorescence	Inscription(s)

Comments: This Laboratory Grown Diamond was created by Chemical Vapor Deposition (CVD) growth process and may include post-growth treatment. Type IIa