



ELECTRONIC COPY

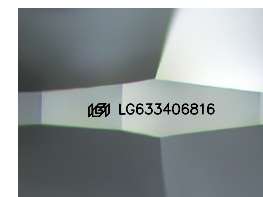
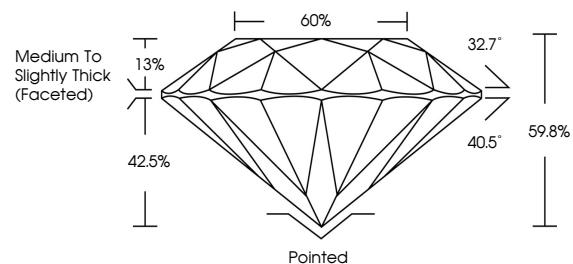
LG633406816
Report verification at igi.org



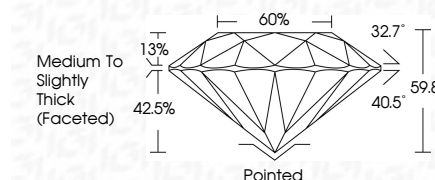
May 3, 2024
IGI Report Number LG633406816
Description LABORATORY GROWN DIAMOND
Shape and Cutting Style ROUND BRILLIANT
Measurements 8.11 - 8.15 X 4.87 MM
GRADING RESULTS
Carat Weight 2.00 CARATS
Color Grade F
Clarity Grade VS 2
Cut Grade EXCELLENT

May 3, 2024
IGI Report Number LG633406816
Description LABORATORY GROWN DIAMOND
Shape and Cutting Style ROUND BRILLIANT
Measurements 8.11 - 8.15 X 4.87 MM
GRADING RESULTS
Carat Weight 2.00 CARATS
Color Grade F
Clarity Grade VS 2
Cut Grade EXCELLENT

PROPORTIONS



Sample Image Used



ADDITIONAL GRADING INFORMATION

Polish EXCELLENT
Symmetry EXCELLENT
Fluorescence NONE
Inscription(s) IGI LG633406816

ADDITIONAL GRADING INFORMATION

Polish EXCELLENT
Symmetry EXCELLENT
Fluorescence NONE
Inscription(s) IGI LG633406816
Comments: This Laboratory Grown Diamond was created by Chemical Vapor Deposition (CVD) growth process and may include post-growth treatment. Type IIa

COLOR

D E F G H I J Faint Very Light Light

CLARITY

IF VS 1-2 VS 1-2 SI 1-2 I 1-3
Internally Flawless Very Very Slightly Included Very Slightly Included Slightly Included Included



IGI

May 3, 2024
IGI Report No LG633406816
ROUND BRILLIANT
8.11 - 8.15 X 4.87 MM
2.00 CARATS
Color Grade F
Clarity Grade VS 2
Depth 59.8%
Table 60%
Girdle Medium To Slightly Thick (Faceted)
Culet Pointed
Polish EXCELLENT
Symmetry EXCELLENT
Fluorescence NONE
Inscriptions(s) IGI LG633406816

Comments: This Laboratory Grown Diamond was created by Chemical Vapor Deposition (CVD) growth process and may include post-growth treatment. Type IIa