



ELECTRONIC COPY

LG633407483 Report verification at igi.org



May 14, 2024 IGI Report Number LG633407483 Description LABORATORY GROWN DIAMOND Shape and Cutting Style CUT CORNERED RECTANGULAR MODIFIED BRILLIANT Measurements 8.89 X 6.13 X 4.18 MM GRADING RESULTS Carat Weight 2.05 CARATS Color Grade F Clarity Grade VS 1

LABORATORY GROWN DIAMOND REPORT

May 14, 2024 IGI Report Number LG633407483 Description LABORATORY GROWN DIAMOND Shape and Cutting Style CUT CORNERED RECTANGULAR MODIFIED BRILLIANT Measurements 8.89 X 6.13 X 4.18 MM

GRADING RESULTS

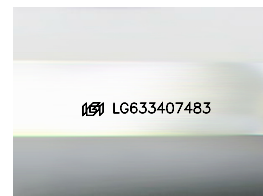
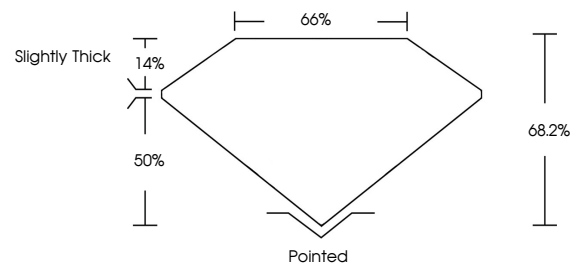
Carat Weight 2.05 CARATS Color Grade F Clarity Grade VS 1

ADDITIONAL GRADING INFORMATION

Polish EXCELLENT Symmetry EXCELLENT Fluorescence NONE Inscription(s) LG633407483

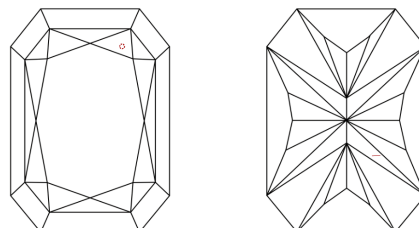
Comments: This Laboratory Grown Diamond was created by Chemical Vapor Deposition (CVD) growth process and may include post-growth treatment. Type IIa

PROPORTIONS



Sample Image Used

CLARITY CHARACTERISTICS



KEY TO SYMBOLS

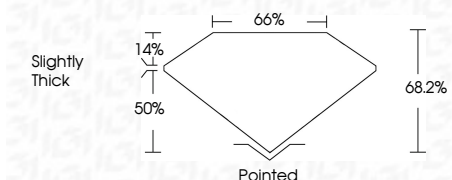
Red symbols indicate internal characteristics. Green symbols indicate external characteristics.

COLOR

D E F G H I J Faint Very Light Light

CLARITY

IF VS 1-2 VS 1-2 SI 1-2 I 1-3 Internally Flawless Very Very Slightly Included Very Slightly Included Slightly Included Included



ADDITIONAL GRADING INFORMATION

Polish EXCELLENT Symmetry EXCELLENT Fluorescence NONE Inscription(s) LG633407483 Comments: This Laboratory Grown Diamond was created by Chemical Vapor Deposition (CVD) growth process and may include post-growth treatment. Type IIa



IGI



May 14, 2024 IGI Report No LG633407483 CUT CORNERED RECT. MODIFIED BRILLIANT 2.05 CARATS F VS 1 8.89 X 6.13 X 4.18 MM 68.2% 50% Slightly Thick Pointed EXCELLENT EXCELLENT NONE LG633407483

Comments: This Laboratory Grown Diamond was created by Chemical Vapor Deposition (CVD) growth process and may include post-growth treatment. Type IIa