

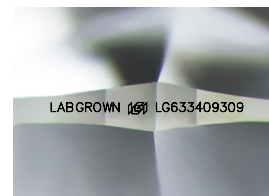
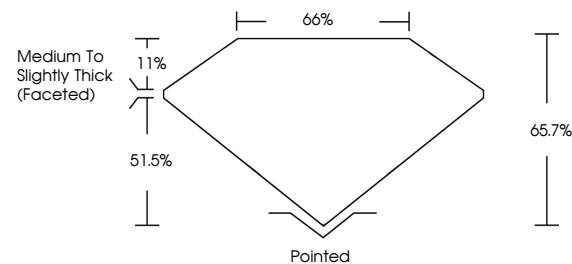


ELECTRONIC COPY

LABORATORY GROWN DIAMOND REPORT

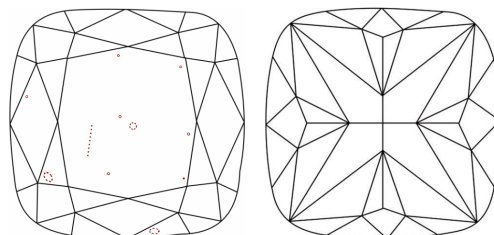
LG633409309
Report verification at lgi.org

PROPORTIONS



Sample Image Used

CLARITY CHARACTERISTICS



KEY TO SYMBOLS

Red symbols indicate internal characteristics.
Green symbols indicate external characteristics.

COLOR

D E F G H I J Faint Very Light Light

CLARITY

IF	VVS ^{1,2}	VS ^{1,2}	SI ^{1,2}	I ^{1,3}
Internally Flawless	Very Very Slightly Included	Very Slightly Included	Slightly Included	Included



© IGI 2020, International Gemological Institute

FD - 10 20

DIAMOND REPORT



May 6, 2024

IGI Report Number **LG633409309**Description **LABORATORY GROWN DIAMOND**Shape and Cutting Style **SQUARE CUSHION BRILLIANT**

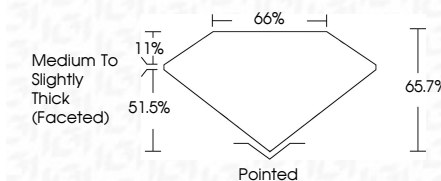
Measurements 8.32 X 8.04 X 5.28 MM

GRADING RESULTS

Carat Weight **2.73 CARATS**

Color Grade

Clarity Grade SI 1



ADDITIONAL GRADING INFORMATION

Polish **EXCELLENT**Symmetry **EXCELLENT**Fluorescence **NONE**

Inscription(s) LABGROWN 1131 LG633409309

Comments: This Laboratory Grown Diamond was created by Chemical Vapor Deposition (CVD) growth process and may include post-growth treatment.
Type IIa



May 4, 2024	GI Report No. LG533409309	2.73 CARATS
GL REPORT NO. LG533409309	Carat Weight	SI 1
CLASH CUSHION BRILLIANT	Color Grade	65.7%
32.32 X 8.04 X 5.28 MM	Clarity Grade	65%
	Depth	Medium to Slightly Thick Faceted
	Table	
	Girdle	Pointed
	Culet	EXCELLENT
	Polish	EXCELLENT
	Symmetry	NONE
	Fluorescence	LABELGROWN 199
	Inscription(s)	LG533409309

Comments:

This Laboratory Grown Diamond was created by Chemical Vapor Deposition (CVD) growth process and may include trace growth treatment.

Comments:
This Laboratory Grown Diamond was created by Chemical Vapor Deposition (CVD) growth process and may include post-growth treatment.