



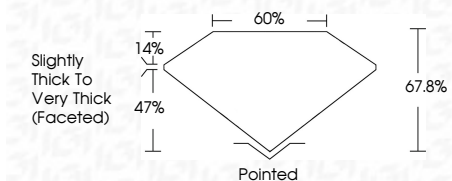
ELECTRONIC COPY

LG633410059 Report verification at igi.org



May 14, 2024 IGI Report Number LG633410059 Description LABORATORY GROWN DIAMOND Shape and Cutting Style SQUARE CUSHION MODIFIED BRILLIANT Measurements 7.90 X 7.90 X 5.36 MM

GRADING RESULTS Carat Weight 3.11 CARATS Color Grade FANCY VIVID PINK Clarity Grade VS 1



ADDITIONAL GRADING INFORMATION Polish EXCELLENT Symmetry EXCELLENT Fluorescence SLIGHT Inscription(s) LG633410059 Comments: This Laboratory Grown Diamond was created by Chemical Vapor Deposition (CVD) growth process. Indications of post-growth treatment.



May 14, 2024 IGI Report No LG633410059 SQUARE CUSHION MODIFIED BRILLIANT 7.90 X 7.90 X 5.36 MM 3.11 CARATS FANCY VIVID PINK VS 1 67.8% 60% Slightly Thick To Very Thick (Faceted) Pointed EXCELLENT EXCELLENT SLIGHT LG633410059

Comments: This Laboratory Grown Diamond was created by Chemical Vapor Deposition (CVD) growth process. Indications of post-growth treatment.

LABORATORY GROWN DIAMOND REPORT

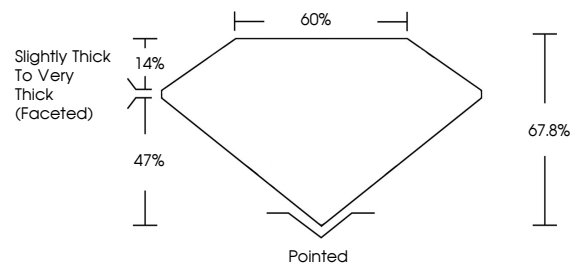
May 14, 2024 IGI Report Number LG633410059 Description LABORATORY GROWN DIAMOND Shape and Cutting Style SQUARE CUSHION MODIFIED BRILLIANT Measurements 7.90 X 7.90 X 5.36 MM

GRADING RESULTS Carat Weight 3.11 CARATS Color Grade FANCY VIVID PINK Clarity Grade VS 1

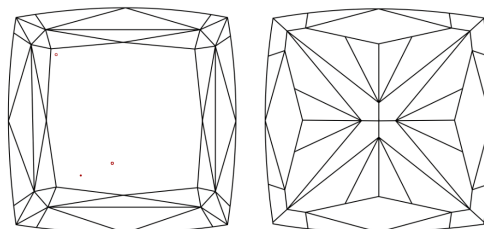
ADDITIONAL GRADING INFORMATION Polish EXCELLENT Symmetry EXCELLENT Fluorescence SLIGHT Inscription(s) LG633410059

Comments: This Laboratory Grown Diamond was created by Chemical Vapor Deposition (CVD) growth process. Indications of post-growth treatment.

PROPORTIONS



CLARITY CHARACTERISTICS



KEY TO SYMBOLS

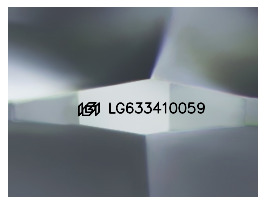
Red symbols indicate internal characteristics. Green symbols indicate external characteristics.

COLOR

D E F G H I J Faint Very Light Light

CLARITY

IF VS 1-2 VS 1-2 SI 1-2 I 1-3 Internally Flawless Very Very Slightly Included Very Slightly Included Slightly Included Included



Sample Image Used

