



ELECTRONIC COPY

LG633410079
Report verification at igi.org



May 18, 2024

IGI Report Number **LG633410079**

Description **LABORATORY GROWN DIAMOND**

Shape and Cutting Style **PRINCESS CUT**

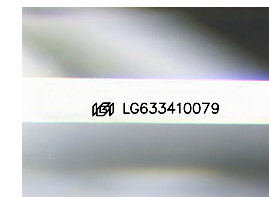
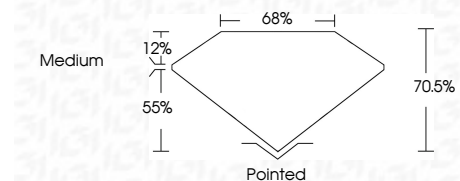
Measurements **7.16 X 6.99 X 4.93 MM**

GRADING RESULTS

Carat Weight **2.16 CARATS**

Color Grade **E**

Clarity Grade **VS 1**



Sample Image Used

ADDITIONAL GRADING INFORMATION

Polish **EXCELLENT**

Symmetry **EXCELLENT**

Fluorescence **NONE**

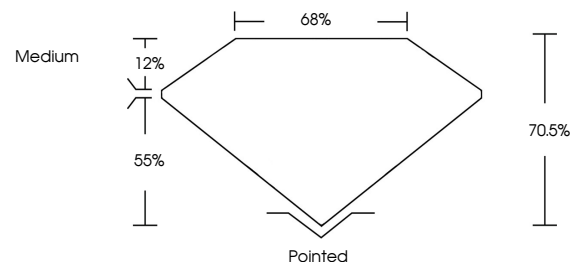
Inscription(s) **IGI LG633410079**

Comments: This Laboratory Grown Diamond was created by Chemical Vapor Deposition (CVD) growth process and may include post-growth treatment. Type IIa

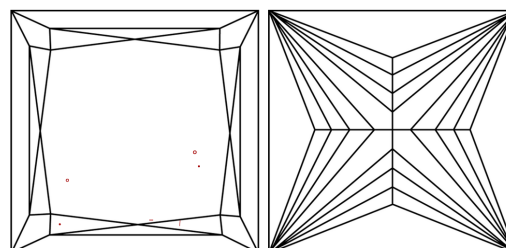


IGI

PROPORTIONS



CLARITY CHARACTERISTICS



KEY TO SYMBOLS

Red symbols indicate internal characteristics.
Green symbols indicate external characteristics.

COLOR

D E F G H I J Faint Very Light Light

CLARITY

IF	VS ¹⁻²	VS ¹⁻²	SI ¹⁻²	I ¹⁻³
Internally Flawless	Very Very Slightly Included	Very Slightly Included	Slightly Included	Included

May 18, 2024
IGI Report No. LG633410079
PRINCESS CUT

2.16 CARATS
E
7.16 X 6.99 X 4.93 MM
Color Grade
Clarity Grade
Depth
Table
Girdle
Medium
Pointed
EXCELLENT
EXCELLENT
NONE
IGI LG633410079

Comments: This Laboratory Grown Diamond was created by Chemical Vapor Deposition (CVD) growth process and may include post-growth treatment. Type IIa

