



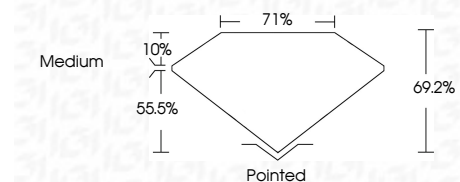
ELECTRONIC COPY

LG633410289
Report verification at igi.org



May 15, 2024
IGI Report Number **LG633410289**
Description **LABORATORY GROWN DIAMOND**
Shape and Cutting Style **PRINCESS CUT**
Measurements **8.15 X 7.99 X 5.53 MM**

GRADING RESULTS
Carat Weight **3.15 CARATS**
Color Grade **H**
Clarity Grade **VS 1**



ADDITIONAL GRADING INFORMATION
Polish **EXCELLENT**
Symmetry **EXCELLENT**
Fluorescence **NONE**
Inscription(s) **IGI LG633410289**
Comments: This Laboratory Grown Diamond was created by Chemical Vapor Deposition (CVD) growth process and may include post-growth treatment. Type IIa



May 15, 2024
IGI Report No. **LG633410289**
PRINCESS CUT
3.15 CARATS
H
Carat Weight **3.15 CARATS**
Color Grade **H**
Clarity Grade **VS 1**
Depth **69.2%**
Table **10%**
Girdle **55.5%**
Medium
Pointed
Polish **EXCELLENT**
Symmetry **EXCELLENT**
Fluorescence **NONE**
Inscription(s) **IGI LG633410289**
Comments: This Laboratory Grown Diamond was created by Chemical Vapor Deposition (CVD) growth process and may include post-growth treatment. Type IIa

LABORATORY GROWN DIAMOND REPORT

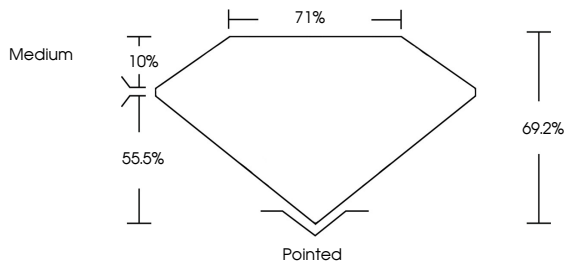
May 15, 2024
IGI Report Number **LG633410289**
Description **LABORATORY GROWN DIAMOND**
Shape and Cutting Style **PRINCESS CUT**
Measurements **8.15 X 7.99 X 5.53 MM**

GRADING RESULTS
Carat Weight **3.15 CARATS**
Color Grade **H**
Clarity Grade **VS 1**

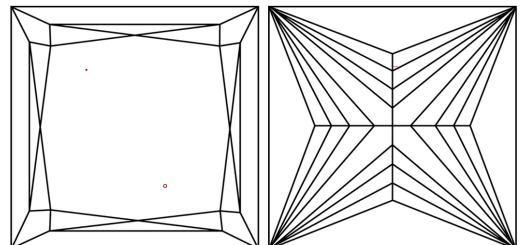
ADDITIONAL GRADING INFORMATION
Polish **EXCELLENT**
Symmetry **EXCELLENT**
Fluorescence **NONE**
Inscription(s) **IGI LG633410289**

Comments: This Laboratory Grown Diamond was created by Chemical Vapor Deposition (CVD) growth process and may include post-growth treatment. Type IIa

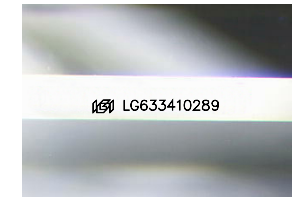
PROPORTIONS



CLARITY CHARACTERISTICS



KEY TO SYMBOLS
Red symbols indicate internal characteristics.
Green symbols indicate external characteristics.



Sample Image Used

COLOR				
D	E	F	G	H I J
			Faint	Very Light
				Light

CLARITY				
IF	VS ¹⁻²	SI ¹⁻²	I ¹⁻³	
Internally Flawless	Very Very Slightly Included	Very Slightly Included	Slightly Included	Included

