



ELECTRONIC COPY

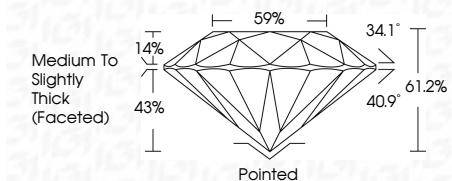
LG633410335
Report verification at igi.org



May 13, 2024
IGI Report Number LG633410335
Description LABORATORY GROWN DIAMOND
Shape and Cutting Style ROUND BRILLIANT
Measurements 10.06 - 10.11 X 6.17 MM

GRADING RESULTS

Carat Weight 3.88 CARATS
Color Grade F
Clarity Grade VS 1
Cut Grade IDEAL



ADDITIONAL GRADING INFORMATION

Polish EXCELLENT
Symmetry EXCELLENT
Fluorescence NONE
Inscription(s) LG633410335
Comments: This Laboratory Grown Diamond was created by Chemical Vapor Deposition (CVD) growth process and may include post-growth treatment. Type IIa



IGI

May 13, 2024
IGI Report No. LG633410335
ROUND BRILLIANT
3.88 CARATS F
10.06 - 10.11 X 6.17 MM VS 1 IDEAL 59%
Medium To Slightly Thick (Faceted)
Pointed EXCELLENT EXCELLENT NONE
None LG633410335
Comments: This Laboratory Grown Diamond was created by Chemical Vapor Deposition (CVD) growth process and may include post-growth treatment. Type IIa

May 13, 2024
IGI Report Number LG633410335
Description LABORATORY GROWN DIAMOND
Shape and Cutting Style ROUND BRILLIANT
Measurements 10.06 - 10.11 X 6.17 MM

GRADING RESULTS

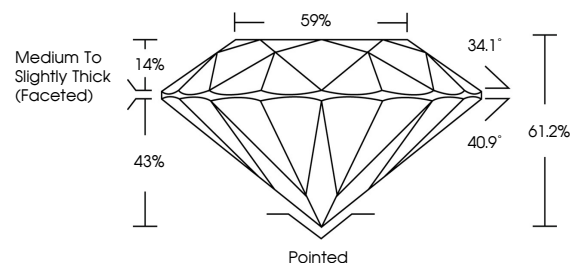
Carat Weight 3.88 CARATS
Color Grade F
Clarity Grade VS 1
Cut Grade IDEAL

ADDITIONAL GRADING INFORMATION

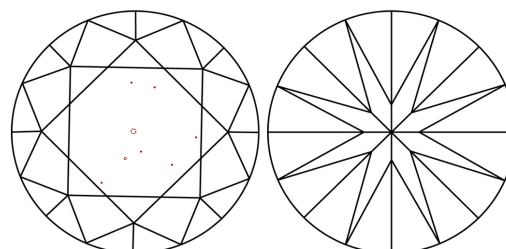
Polish EXCELLENT
Symmetry EXCELLENT
Fluorescence NONE
Inscription(s) LG633410335

Comments: This Laboratory Grown Diamond was created by Chemical Vapor Deposition (CVD) growth process and may include post-growth treatment. Type IIa

PROPORTIONS

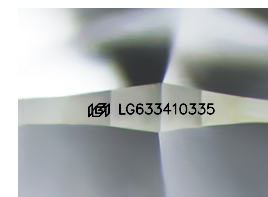


CLARITY CHARACTERISTICS



KEY TO SYMBOLS

Red symbols indicate internal characteristics.
Green symbols indicate external characteristics.



Sample Image Used

COLOR

D E F G H I J Faint Very Light Light

CLARITY

IF VS 1-2 VS 1-2 SI 1-2 I 1-3
Internally Flawless Very Very Slightly Included Very Slightly Included Slightly Included Included

