



ELECTRONIC COPY

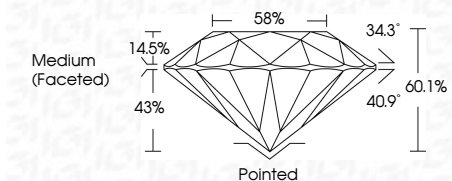
LG633410357
Report verification at igi.org



May 13, 2024
IGI Report Number LG633410357
Description LABORATORY GROWN DIAMOND
Shape and Cutting Style ROUND BRILLIANT
Measurements 9.97 - 10.04 X 6.02 MM

GRADING RESULTS

Carat Weight 3.66 CARATS
Color Grade F
Clarity Grade SI 2
Cut Grade IDEAL



ADDITIONAL GRADING INFORMATION

Polish EXCELLENT
Symmetry EXCELLENT
Fluorescence NONE
Inscription(s) LG633410357
Comments: This Laboratory Grown Diamond was created by Chemical Vapor Deposition (CVD) growth process and may include post-growth treatment. Type IIa



IGI

May 13, 2024
IGI Report No LG633410357
ROUND BRILLIANT
3.66 CARATS F
9.97 - 10.04 X 6.02 MM
SI 2 IDEAL
60.1% 58%
Medium (Faceted)
Pointed EXCELLENT
EXCELLENT
NONE
None
Inscriptions) IGI LG633410357
Comments: This Laboratory Grown Diamond was created by Chemical Vapor Deposition (CVD) growth process and may include post-growth treatment. Type IIa

LABORATORY GROWN DIAMOND REPORT

May 13, 2024
IGI Report Number LG633410357
Description LABORATORY GROWN DIAMOND
Shape and Cutting Style ROUND BRILLIANT
Measurements 9.97 - 10.04 X 6.02 MM

GRADING RESULTS

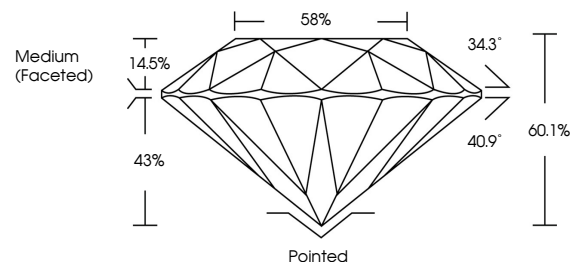
Carat Weight 3.66 CARATS
Color Grade F
Clarity Grade SI 2
Cut Grade IDEAL

ADDITIONAL GRADING INFORMATION

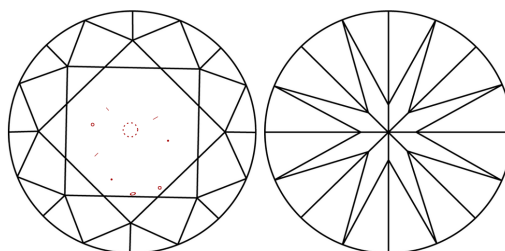
Polish EXCELLENT
Symmetry EXCELLENT
Fluorescence NONE
Inscription(s) LG633410357

Comments: This Laboratory Grown Diamond was created by Chemical Vapor Deposition (CVD) growth process and may include post-growth treatment. Type IIa

PROPORTIONS

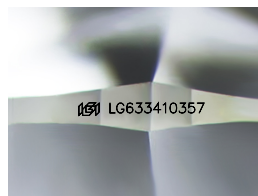


CLARITY CHARACTERISTICS



KEY TO SYMBOLS

Red symbols indicate internal characteristics.
Green symbols indicate external characteristics.



Sample Image Used

COLOR

D E F G H I J Faint Very Light Light

CLARITY

IF VS 1-2 VS 1-2 SI 1-2 I 1-3
Internally Flawless Very Very Slightly Included Very Slightly Included Slightly Included Included

