



ELECTRONIC COPY

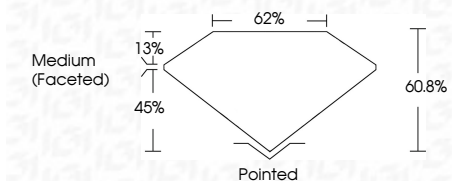
LG633410371 Report verification at igi.org



May 13, 2024 IGI Report Number LG633410371 Description LABORATORY GROWN DIAMOND Shape and Cutting Style OVAL BRILLIANT Measurements 10.43 X 7.73 X 4.70 MM

GRADING RESULTS

Carat Weight 2.36 CARATS Color Grade F Clarity Grade VS 2



ADDITIONAL GRADING INFORMATION

Polish EXCELLENT Symmetry EXCELLENT Fluorescence NONE Inscription(s) IGI LG633410371 Comments: This Laboratory Grown Diamond was created by Chemical Vapor Deposition (CVD) growth process and may include post-growth treatment. Type IIa



IGI

May 13, 2024 IGI Report No LG633410371 OVAL BRILLIANT 2.36 CARATS F VS 2 60.8% 62% Medium (Faceted) Pointed EXCELLENT EXCELLENT NONE IGI LG633410371

Comments: This Laboratory Grown Diamond was created by Chemical Vapor Deposition (CVD) growth process and may include post-growth treatment. Type IIa

LABORATORY GROWN DIAMOND REPORT

May 13, 2024 IGI Report Number LG633410371 Description LABORATORY GROWN DIAMOND Shape and Cutting Style OVAL BRILLIANT Measurements 10.43 X 7.73 X 4.70 MM

GRADING RESULTS

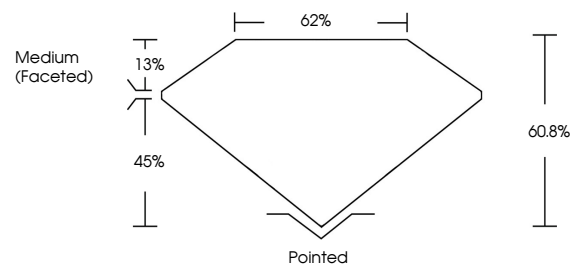
Carat Weight 2.36 CARATS Color Grade F Clarity Grade VS 2

ADDITIONAL GRADING INFORMATION

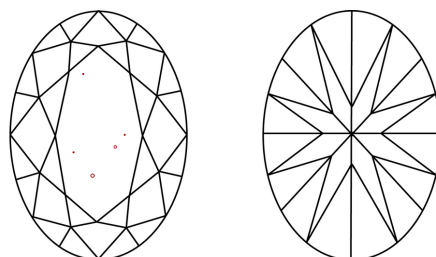
Polish EXCELLENT Symmetry EXCELLENT Fluorescence NONE Inscription(s) IGI LG633410371

Comments: This Laboratory Grown Diamond was created by Chemical Vapor Deposition (CVD) growth process and may include post-growth treatment. Type IIa

PROPORTIONS

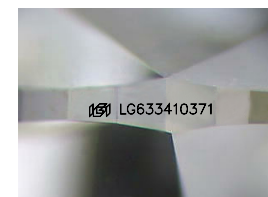


CLARITY CHARACTERISTICS



KEY TO SYMBOLS

Red symbols indicate internal characteristics. Green symbols indicate external characteristics.



Sample Image Used

COLOR

D E F G H I J Faint Very Light Light

CLARITY

IF VS 1-2 VS 1-2 SI 1-2 I 1-3 Internally Flawless Very Very Slightly Included Very Slightly Included Slightly Included Included

