



ELECTRONIC COPY

LABORATORY GROWN DIAMOND REPORT

May 15, 2024
IGI Report Number LG633411050
Description LABORATORY GROWN DIAMOND
Shape and Cutting Style PRINCESS CUT
Measurements 6.03 X 5.83 X 4.21 MM

GRADING RESULTS

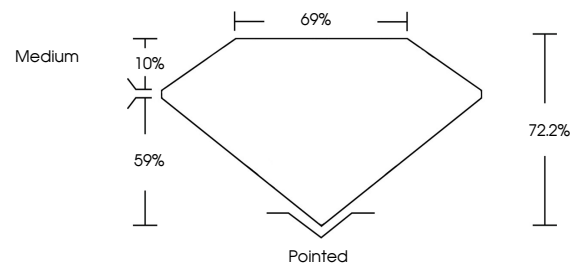
Carat Weight 1.24 CARAT
Color Grade E
Clarity Grade VS 2

ADDITIONAL GRADING INFORMATION

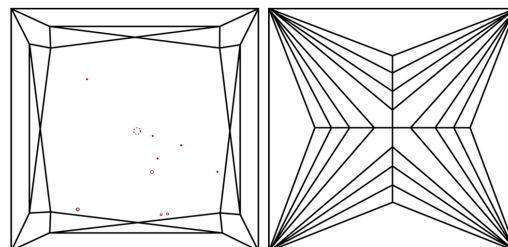
Polish EXCELLENT
Symmetry EXCELLENT
Fluorescence NONE
Inscription(s) IGI LG633411050

Comments: This Laboratory Grown Diamond was created by Chemical Vapor Deposition (CVD) growth process and may include post-growth treatment. Type IIa

PROPORTIONS

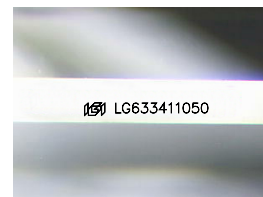


CLARITY CHARACTERISTICS



KEY TO SYMBOLS

Red symbols indicate internal characteristics.
Green symbols indicate external characteristics.



Sample Image Used

COLOR

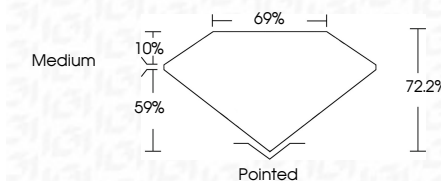
D E F G H I J Faint Very Light Light

CLARITY

IF VS 1-2 VS 1-2 SI 1-2 I 1-3
Internally Flawless Very Very Slightly Included Very Slightly Included Slightly Included Included



May 15, 2024
IGI Report Number LG633411050
Description LABORATORY GROWN DIAMOND
Shape and Cutting Style PRINCESS CUT
Measurements 6.03 X 5.83 X 4.21 MM
GRADING RESULTS
Carat Weight 1.24 CARAT
Color Grade E
Clarity Grade VS 2



ADDITIONAL GRADING INFORMATION

Polish EXCELLENT
Symmetry EXCELLENT
Fluorescence NONE
Inscription(s) IGI LG633411050

Comments: This Laboratory Grown Diamond was created by Chemical Vapor Deposition (CVD) growth process and may include post-growth treatment. Type IIa



IGI



May 15, 2024
IGI Report No. LG633411050
PRINCESS CUT
6.03 X 5.83 X 4.21 MM
1.24 CARAT
E
VS 2
72.2%
59%
Medium
Pointed
EXCELLENT
EXCELLENT
NONE
IGI LG633411050

Comments: This Laboratory Grown Diamond was created by Chemical Vapor Deposition (CVD) growth process and may include post-growth treatment. Type IIa