



ELECTRONIC COPY

LABORATORY GROWN DIAMOND REPORT

May 14, 2024	
IGI Report Number	LG633411259
Description	LABORATORY GROWN DIAMOND
Shape and Cutting Style	PRINCESS CUT
Measurements	7.91 X 7.88 X 5.67 MM

GRADING RESULTS

Carat Weight	3.02 CARATS
Color Grade	F
Clarity Grade	VS 2

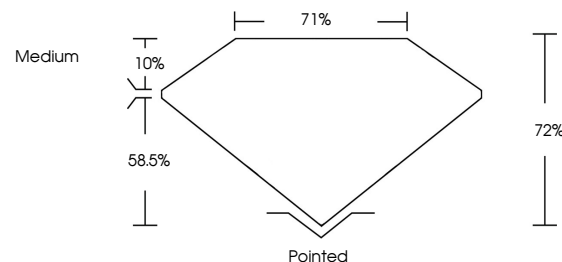
ADDITIONAL GRADING INFORMATION

Polish	EXCELLENT
Symmetry	EXCELLENT
Fluorescence	NONE
Inscription(s)	15 LG633411259

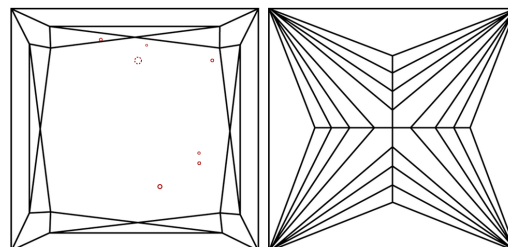
Comments: This Laboratory Grown Diamond was created by Chemical Vapor Deposition (CVD) growth process and may include post-growth treatment. Type IIa

LG633411259
Report verification at lgi.org

PROPORTIONS

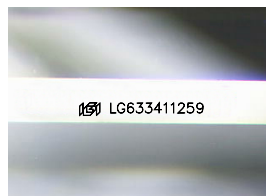


CLARITY CHARACTERISTICS



KEY TO SYMBOLS

Red symbols indicate internal characteristics.
Green symbols indicate external characteristics.



Sample Image Used

COLOR

D E F G H I J Faint Very Light Light

CLARITY

IF	VVS ^{1,2}	VS ^{1,2}	SI ^{1,2}	I ^{1,3}
Internally Flawless	Very Very Slightly Included	Very Slightly Included	Slightly Included	Included



© IGI 2020, International Gemological Institute

FD - 10 20

www.igi.org

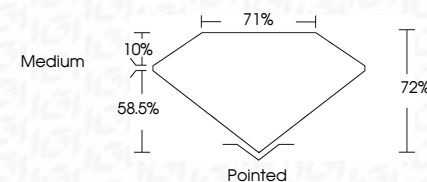
DIAMOND REPORT



May 14, 2024	
IGI Report Number	LG633411259
Description	LABORATORY GROWN DIAMOND
Shape and Cutting Style	PRINCESS CUT
Measurements	7.91 X 7.88 X 5.67 MM

GRADING RESULTS

Carat Weight	3.02 CARATS
Color Grade	F
Clarity Grade	VS 2



ADDITIONAL GRADING INFORMATION

Polish	EXCELLENT
Symmetry	EXCELLENT
Fluorescence	NONE
Inscription(s)	 LG633411259

Comments: This Laboratory Grown Diamond was created by Chemical Vapor Deposition (CVD) growth process and may include post-growth treatment.
Type IIa



May 14, 2024
 IGI Report No LG633411259
 PRINCESS CLIT

3.02 CARATS	VS 2	Pointed	EXCELLENT	see ICA5341729
Color Grade	72%	Medium	EXCELLENT	
Clarity Grade	71%		NONE	
Depth	Medium			
Table				
Girdle				
Quiet				
Polish				
Symmetry				
Fluorescence				
Inscriptions(s)				

Comments:
This Laboratory Grown Diamond was created by Chemical Vapor Deposition (CVD) growth process and may include post-growth treatment.