



ELECTRONIC COPY

LG633411789
Report verification at igi.org



May 15, 2024
IGI Report Number **LG633411789**
Description **LABORATORY GROWN DIAMOND**
Shape and Cutting Style **CUSHION MODIFIED BRILLIANT**
Measurements **8.08 X 6.95 X 4.28 MM**
GRADING RESULTS
Carat Weight **2.07 CARATS**
Color Grade **FANCY GREYISH YELLOW**
Clarity Grade **VS 1**

LABORATORY GROWN DIAMOND REPORT

May 15, 2024
IGI Report Number **LG633411789**
Description **LABORATORY GROWN DIAMOND**
Shape and Cutting Style **CUSHION MODIFIED BRILLIANT**
Measurements **8.08 X 6.95 X 4.28 MM**

GRADING RESULTS

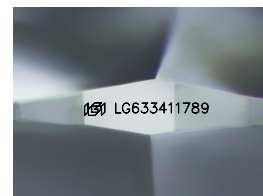
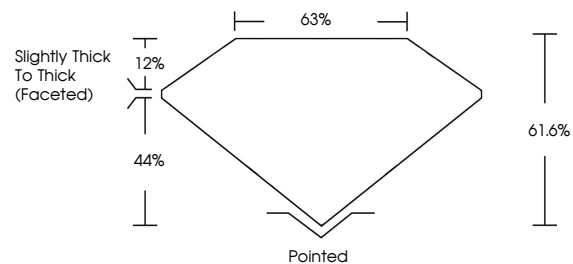
Carat Weight **2.07 CARATS**
Color Grade **FANCY GREYISH YELLOW**
Clarity Grade **VS 1**

ADDITIONAL GRADING INFORMATION

Polish **EXCELLENT**
Symmetry **EXCELLENT**
Fluorescence **NONE**
Inscription(s) **LG633411789**

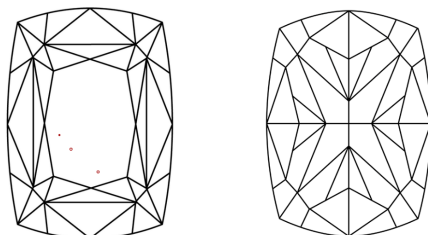
Comments: This Laboratory Grown Diamond was created by Chemical Vapor Deposition (CVD) growth process and may include post-growth treatment.

PROPORTIONS



Sample Image Used

CLARITY CHARACTERISTICS



KEY TO SYMBOLS

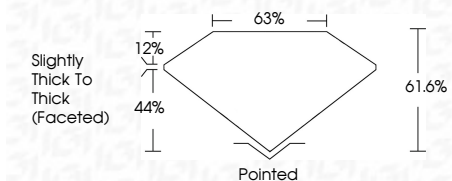
Red symbols indicate internal characteristics.
Green symbols indicate external characteristics.

COLOR

D E F G H I J Faint Very Light Light

CLARITY

IF	VS ¹⁻²	VS ¹⁻²	SI ¹⁻²	I ¹⁻³
Internally Flawless	Very Very Slightly Included	Very Slightly Included	Slightly Included	Included



ADDITIONAL GRADING INFORMATION

Polish **EXCELLENT**
Symmetry **EXCELLENT**
Fluorescence **NONE**
Inscription(s) **LG633411789**

Comments: This Laboratory Grown Diamond was created by Chemical Vapor Deposition (CVD) growth process and may include post-growth treatment.



IGI

May 15, 2024
IGI Report No **LG633411789**
CUSHION MODIFIED BRILLIANT
8.08 X 6.95 X 4.28 MM
Carat Weight **2.07 CARATS**
Color Grade **FANCY GREYISH YELLOW**
Clarity Grade **VS 1**
Depth **61.6%**
Table **63%**
Girdle **Slightly Thick To Thick (Faceted)**
Culet **Pointed**
Polish **EXCELLENT**
Symmetry **EXCELLENT**
Fluorescence **NONE**
Inscription(s) **LG633411789**

Comments: This Laboratory Grown Diamond was created by Chemical Vapor Deposition (CVD) growth process and may include post-growth treatment.