



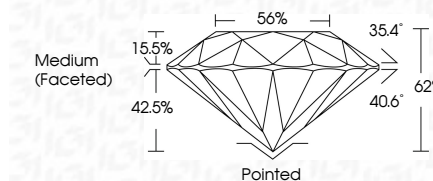
ELECTRONIC COPY

LG633420660 Report verification at igi.org



May 30, 2024 IGI Report Number LG633420660 Description LABORATORY GROWN DIAMOND Shape and Cutting Style ROUND BRILLIANT Measurements 6.54 - 6.59 X 4.07 MM

GRADING RESULTS Carat Weight 1.08 CARAT Color Grade D Clarity Grade VVS 2 Cut Grade IDEAL



ADDITIONAL GRADING INFORMATION Polish EXCELLENT Symmetry EXCELLENT Fluorescence NONE Inscription(s) IGI LG633420660 Comments: As Grown - No indication of post-growth treatment. This Laboratory Grown Diamond was created by High Pressure High Temperature (HPHT) growth process. Type II



May 30, 2024 IGI Report No LG633420660 ROUND BRILLIANT 1.08 CARAT D 6.54 - 6.59 X 4.07 MM VVS 2 IDEAL 62% 56% Medium (Faceted) Pointed EXCELLENT EXCELLENT NONE IGI LG633420660

LABORATORY GROWN DIAMOND REPORT

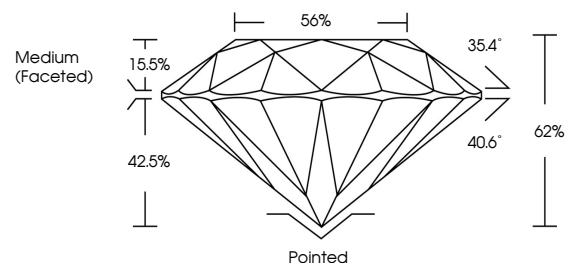
May 30, 2024 IGI Report Number LG633420660 Description LABORATORY GROWN DIAMOND Shape and Cutting Style ROUND BRILLIANT Measurements 6.54 - 6.59 X 4.07 MM

GRADING RESULTS Carat Weight 1.08 CARAT Color Grade D Clarity Grade VVS 2 Cut Grade IDEAL

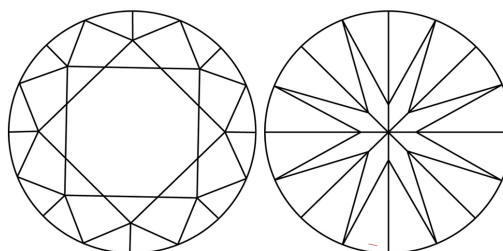
ADDITIONAL GRADING INFORMATION Polish EXCELLENT Symmetry EXCELLENT Fluorescence NONE Inscription(s) IGI LG633420660

Comments: As Grown - No indication of post-growth treatment. This Laboratory Grown Diamond was created by High Pressure High Temperature (HPHT) growth process. Type II

PROPORTIONS

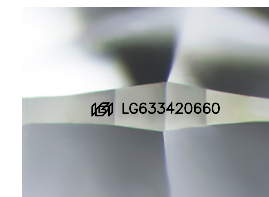


CLARITY CHARACTERISTICS



KEY TO SYMBOLS

Red symbols indicate internal characteristics. Green symbols indicate external characteristics.



Sample Image Used

COLOR

D E F G H I J Faint Very Light Light

CLARITY

IF VVS 1-2 VS 1-2 SI 1-2 I 1-3 Internally Flawless Very Very Slightly Included Very Slightly Included Slightly Included Included



May 30, 2024 IGI Report No LG633420660 ROUND BRILLIANT

1.08 CARAT D 6.54 - 6.59 X 4.07 MM VVS 2 IDEAL 62% 56% Medium (Faceted) Pointed EXCELLENT EXCELLENT NONE IGI LG633420660

Comments: As Grown - No indication of post-growth treatment. This Laboratory Grown Diamond was created by High Pressure High Temperature (HPHT) growth process. Type II