



ELECTRONIC COPY

LG633422540
Report verification at igi.org



May 4, 2024

IGI Report Number **LG633422540**

Description **LABORATORY GROWN DIAMOND**

Shape and Cutting Style **CUT CORNERED
RECTANGULAR MODIFIED
BRILLIANT**

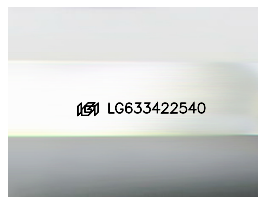
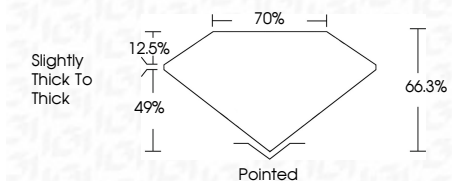
Measurements **12.71 X 8.89 X 5.89 MM**

GRADING RESULTS

Carat Weight **6.00 CARATS**

Color Grade **F**

Clarity Grade **VS 2**



Sample Image Used

ADDITIONAL GRADING INFORMATION

Polish **EXCELLENT**

Symmetry **EXCELLENT**

Fluorescence **NONE**

Inscription(s) **IGI LG633422540**

Comments: This Laboratory Grown Diamond was created by Chemical Vapor Deposition (CVD) growth process and may include post-growth treatment. Type IIa

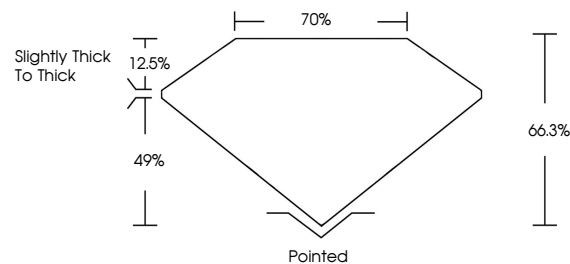


IGI

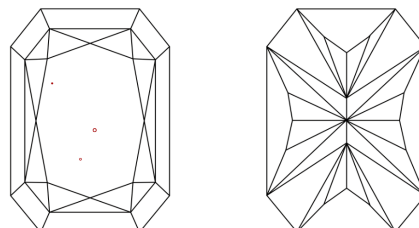
May 4, 2024	IGI Report No LG633422540	CUT CORNERED RECT. MODIFIED BRILLIANT	12.71 X 8.89 X 5.89 MM	6.00 CARATS	F	VS 2	66.3%	70%	Slightly thick to thick	Pointed	EXCELLENT	EXCELLENT	NONE	IGI LG633422540
Color Grade	Clarity Grade	Depth	Table	Girdle	Culet	Polish	Symmetry	Fluorescence	Inscription(s)	Comments: This Laboratory Grown Diamond was created by Chemical Vapor Deposition (CVD) growth process and may include post-growth treatment. Type IIa				



PROPORTIONS



CLARITY CHARACTERISTICS



KEY TO SYMBOLS

Red symbols indicate internal characteristics.
Green symbols indicate external characteristics.

COLOR

D E F G H I J Faint Very Light Light

CLARITY

IF	VS ¹⁻²	VS ¹⁻²	SI ¹⁻²	I ¹⁻³
Internally Flawless	Very Very Slightly Included	Very Slightly Included	Slightly Included	Included

