



ELECTRONIC COPY

LG633422816
Report verification at igi.org



May 8, 2024

IGI Report Number **LG633422816**

Description **LABORATORY GROWN DIAMOND**

Shape and Cutting Style **OVAL BRILLIANT**

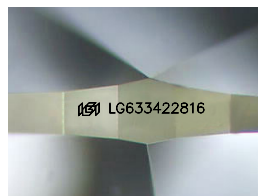
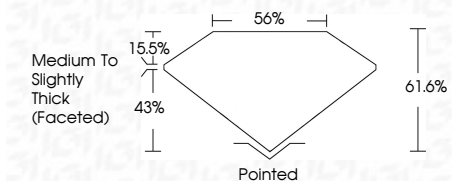
Measurements **14.40 X 9.85 X 6.07 MM**

GRADING RESULTS

Carat Weight **5.26 CARATS**

Color Grade **F**

Clarity Grade **VVS 2**



Sample Image Used

ADDITIONAL GRADING INFORMATION

Polish **EXCELLENT**

Symmetry **EXCELLENT**

Fluorescence **NONE**

Inscription(s) **IGI LG633422816**

Comments: This Laboratory Grown Diamond was created by Chemical Vapor Deposition (CVD) growth process and may include post-growth treatment. Type IIa



IGI

May 8, 2024	IGI Report No LG633422816	5.26 CARATS	F	VVS 2	61.6%	43%	Medium to Slightly Thick (Faceted)	Pointed	EXCELLENT	EXCELLENT	NONE	IGI LG633422816
IGI Report No	LG633422816	14.40 X 9.85 X 6.07 MM	Color Grade	Clarity Grade	Depth	Table	Grades	Culet	Polish	Symmetry	Fluorescence	Inscription(s)

Comments: This Laboratory Grown Diamond was created by Chemical Vapor Deposition (CVD) growth process and may include post-growth treatment. Type IIa

May 8, 2024

IGI Report No LG633422816

14.40 X 9.85 X 6.07 MM

Color Grade

Clarity Grade

Depth

Table

Grades

Culet

Polish

Symmetry

Fluorescence

Inscription(s)

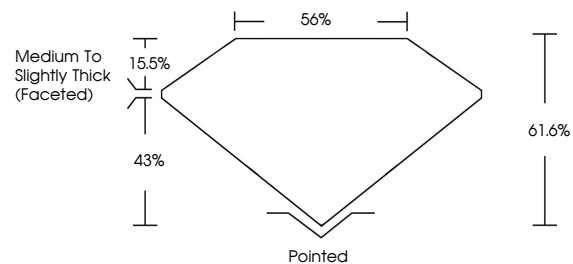
COLOR

D E F G H I J Faint Very Light Light

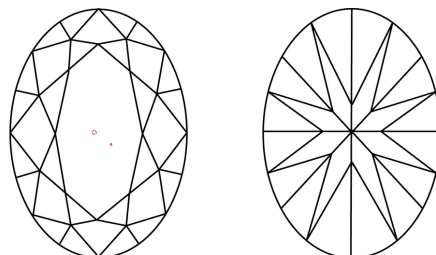
CLARITY

IF	VS ¹⁻²	VS ¹⁻²	SI ¹⁻²	I ¹⁻³
Internally Flawless	Very Very Slightly Included	Very Slightly Included	Slightly Included	Included

PROPORTIONS



CLARITY CHARACTERISTICS



KEY TO SYMBOLS

Red symbols indicate internal characteristics.
Green symbols indicate external characteristics.

