



ELECTRONIC COPY

LG633424095
Report verification at igi.org



May 11, 2024

IGI Report Number **LG633424095**

Description **LABORATORY GROWN DIAMOND**

Shape and Cutting Style **EMERALD CUT**

Measurements **9.72 X 6.94 X 4.74 MM**

GRADING RESULTS

Carat Weight **3.13 CARATS**

Color Grade **FANCY VIVID BLUE**

Clarity Grade **VS 2**

LABORATORY GROWN DIAMOND REPORT

May 11, 2024

IGI Report Number **LG633424095**

Description **LABORATORY GROWN DIAMOND**

Shape and Cutting Style **EMERALD CUT**

Measurements **9.72 X 6.94 X 4.74 MM**

GRADING RESULTS

Carat Weight **3.13 CARATS**

Color Grade **FANCY VIVID BLUE**

Clarity Grade **VS 2**

ADDITIONAL GRADING INFORMATION

Polish **EXCELLENT**

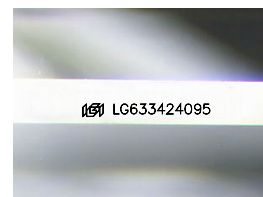
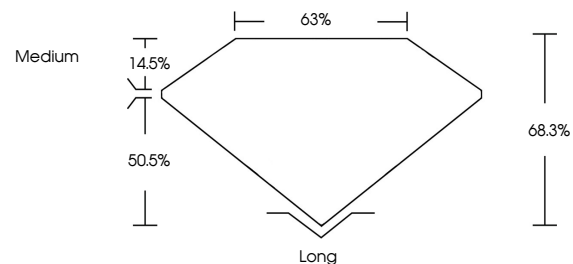
Symmetry **EXCELLENT**

Fluorescence **NONE**

Inscription(s) **IGI LG633424095**

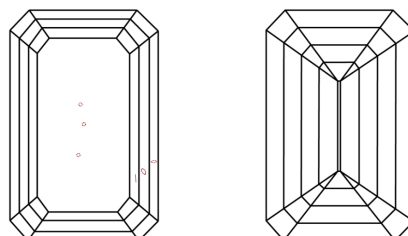
Comments: This Laboratory Grown Diamond was created by Chemical Vapor Deposition (CVD) growth process. Indications of post-growth treatment.

PROPORTIONS



Sample Image Used

CLARITY CHARACTERISTICS



KEY TO SYMBOLS

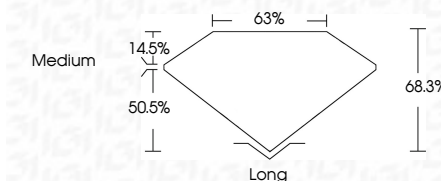
Red symbols indicate internal characteristics.
Green symbols indicate external characteristics.

COLOR

D E F G H I J Faint Very Light Light

CLARITY

| | | | | |
|---------------------|-----------------------------|------------------------|-------------------|------------------|
| IF | VS ¹⁻² | VS ¹⁻² | SI ¹⁻² | I ¹⁻³ |
| Internally Flawless | Very Very Slightly Included | Very Slightly Included | Slightly Included | Included |



ADDITIONAL GRADING INFORMATION

Polish **EXCELLENT**

Symmetry **EXCELLENT**

Fluorescence **NONE**

Inscription(s) **IGI LG633424095**

Comments: This Laboratory Grown Diamond was created by Chemical Vapor Deposition (CVD) growth process. Indications of post-growth treatment.



IGI

May 11, 2024
IGI Report No. LG633424095
EMERALD CUT
3.13 CARATS
FANCY VIVID BLUE
VS 2
68.3%
63%
Medium
Long
EXCELLENT
EXCELLENT
NONE
IGI LG633424095

Comments: This Laboratory Grown Diamond was created by Chemical Vapor Deposition (CVD) growth process. Indications of post-growth treatment.