



ELECTRONIC COPY

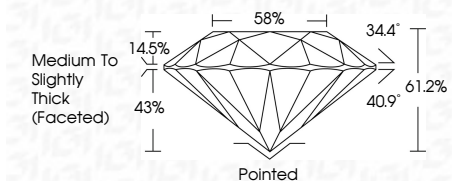
LG633425748
Report verification at igi.org



May 15, 2024
IGI Report Number LG633425748
Description LABORATORY GROWN DIAMOND
Shape and Cutting Style ROUND BRILLIANT
Measurements 7.95 - 7.99 X 4.88 MM

GRADING RESULTS

Carat Weight 1.91 CARAT
Color Grade D
Clarity Grade VS 1
Cut Grade IDEAL



ADDITIONAL GRADING INFORMATION

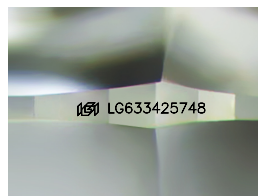
Polish EXCELLENT
Symmetry EXCELLENT
Fluorescence NONE
Inscription(s) LG633425748
Comments: This Laboratory Grown Diamond was created by Chemical Vapor Deposition (CVD) growth process and may include post-growth treatment. Type IIa



IGI

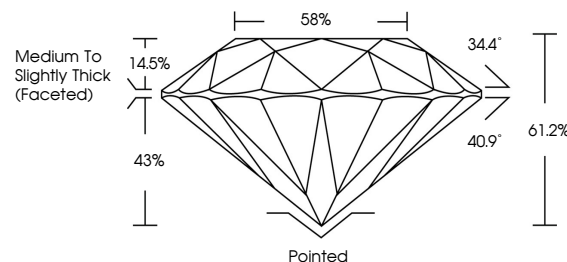
May 15, 2024
IGI Report No LG633425748
ROUND BRILLIANT
1.91 CARAT D
7.95 - 7.99 X 4.88 MM VS 1 IDEAL
Color Grade D IDEAL 61.2% 58%
Medium To Slightly Thick (Faceted)
Pointed EXCELLENT EXCELLENT NONE
Cut Grade IDEAL 61.2% 58%
Medium To Slightly Thick (Faceted)
Polish EXCELLENT EXCELLENT NONE
Symmetry EXCELLENT EXCELLENT NONE
Fluorescence NONE
Inscription(s) LG633425748

Comments: This Laboratory Grown Diamond was created by Chemical Vapor Deposition (CVD) growth process and may include post-growth treatment. Type IIa

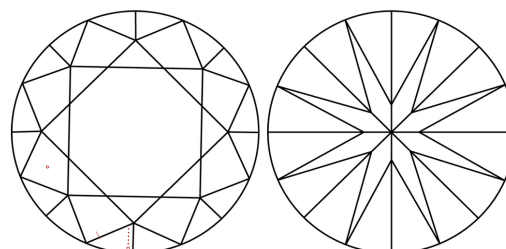


Sample Image Used

PROPORTIONS



CLARITY CHARACTERISTICS



KEY TO SYMBOLS

Red symbols indicate internal characteristics.
Green symbols indicate external characteristics.

COLOR

D E F G H I J Faint Very Light Light

CLARITY

IF VS 1-2 VS 1-2 SI 1-2 I 1-3
Internally Flawless Very Very Slightly Included Very Slightly Included Slightly Included Included

