



ELECTRONIC COPY

LABORATORY GROWN DIAMOND REPORT

May 17, 2024
IGI Report Number LG633426573
Description LABORATORY GROWN DIAMOND
Shape and Cutting Style CUT CORNERED RECTANGULAR MODIFIED BRILLIANT
Measurements 11.34 X 7.81 X 5.17 MM

GRADING RESULTS

Carat Weight 4.05 CARATS
Color Grade G
Clarity Grade SI 1

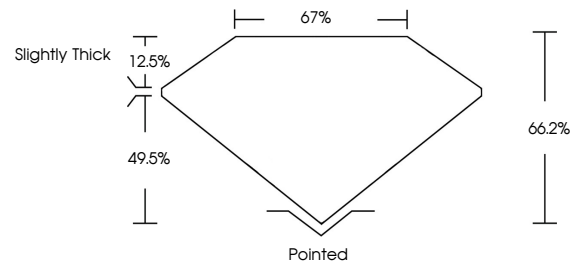
ADDITIONAL GRADING INFORMATION

Polish EXCELLENT
Symmetry EXCELLENT
Fluorescence NONE

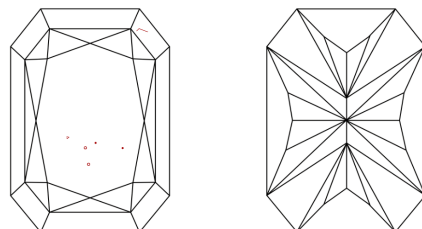
Inscription(s) IGI LG633426573

Comments: This Laboratory Grown Diamond was created by Chemical Vapor Deposition (CVD) growth process and may include post-growth treatment. Type IIa

PROPORTIONS

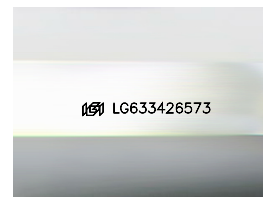


CLARITY CHARACTERISTICS



KEY TO SYMBOLS

Red symbols indicate internal characteristics. Green symbols indicate external characteristics.



Sample Image Used

COLOR

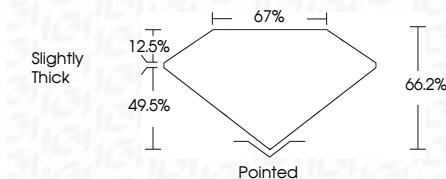
D E F G H I J Faint Very Light Light

CLARITY

IF VS 1-2 VS 1-2 SI 1-2 I 1-3
Internally Flawless Very Very Slightly Included Very Slightly Included Slightly Included Included



May 17, 2024
IGI Report Number LG633426573
Description LABORATORY GROWN DIAMOND
Shape and Cutting Style CUT CORNERED RECTANGULAR MODIFIED BRILLIANT
Measurements 11.34 X 7.81 X 5.17 MM
GRADING RESULTS
Carat Weight 4.05 CARATS
Color Grade G
Clarity Grade SI 1



ADDITIONAL GRADING INFORMATION

Polish EXCELLENT
Symmetry EXCELLENT
Fluorescence NONE
Inscription(s) IGI LG633426573

Comments: This Laboratory Grown Diamond was created by Chemical Vapor Deposition (CVD) growth process and may include post-growth treatment. Type IIa



IGI



May 17, 2024
IGI Report No LG633426573
CUT CORNERED RECT. MODIFIED BRILLIANT
11.34 X 7.81 X 5.17 MM
4.05 CARATS
Color Grade G
Clarity Grade SI 1
Depth 66.2%
Table 12.5%
Girdle 67%
Slightly Thick
Pointed
Polish EXCELLENT
Symmetry EXCELLENT
Fluorescence NONE
Inscription(s) IGI LG633426573

Comments: This Laboratory Grown Diamond was created by Chemical Vapor Deposition (CVD) growth process and may include post-growth treatment. Type IIa