



**ELECTRONIC COPY**

## LABORATORY GROWN DIAMOND REPORT

May 16, 2024	
IGI Report Number	LG633426880
Description	LABORATORY GROWN DIAMOND
Shape and Cutting Style	OVAL BRILLIANT
Measurements	8.74 X 6.54 X 4.03 MM

## GRADING RESULTS

Carat Weight	1.50 CARAT
Color Grade	H
Clarity Grade	VS 1

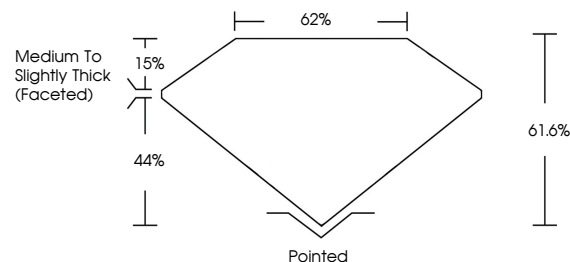
### ADDITIONAL GRADING INFORMATION

Polish	EXCELLENT
Symmetry	EXCELLENT
Fluorescence	NONE
Inscription(s)	15 LG633426880

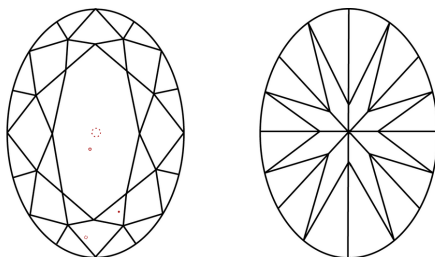
Comments: This Laboratory Grown Diamond was created by Chemical Vapor Deposition (CVD) growth process and may include post-growth treatment.  
Type IIa

LG633426880  
Report verification at [lgi.org](https://lgi.org)

## PROPORTIONS

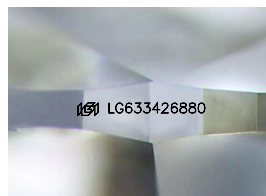


## CLARITY CHARACTERISTICS



## KEY TO SYMBOLS

Red symbols indicate internal characteristics.  
Green symbols indicate external characteristics.



Sample Image Used

## COLOR

D E F G H I J Faint Very Light Light

## CLARITY

IF	VVS <sup>1,2</sup>	VS <sup>1,2</sup>	SI <sup>1,2</sup>	I <sup>1,3</sup>
Internally Flawless	Very Very Slightly Included	Very Slightly Included	Slightly Included	Included



© IGI 2020, International Gemological Institute

FD - 10 20

**www.igi.org**

## DIAMOND REPORT



May 16, 2024	
IGI Report Number	LG633426880
Description	LABORATORY GROWN DIAMOND
Shape and Cutting Style	OVAL BRILLIANT
Measurements	8.74 X 6.54 X 4.03 MM

## GRADING RESULTS

Carat Weight	1.50 CARAT
Color Grade	H
Clarity Grade	VS 1

### ADDITIONAL GRADING INFORMATION

Polish	EXCELLENT
Symmetry	EXCELLENT
Fluorescence	NONE
Inscription(s)	 LG633426880

Comments: This Laboratory Grown Diamond was created by Chemical Vapor Deposition (CVD) growth process and may include post-growth treatment.  
Type IIa



IGI

May 16, 2024  
IGI Report No LG633426880  
OVAL BRILLIANT

3.74 X 6.54 X 4.03 MM	1.50 CARAT
Carat Weight	H
Color Grade	VS 1
Clarity Grade	61.6%
Depth	62%
Table	Medium To Slightly Thick (medium)
Girdle	Pointed
Culet	EXCELLENT
Polish	EXCELLENT
Symmetry	NONE
Fluorescence	None (CFL-3500)

**Comments:**  
This Laboratory Grown Diamond was created by Chemical Vapor Deposition (CVD) growth process and may include post-growth treatment.  
Type IIa