



ELECTRONIC COPY

LABORATORY GROWN DIAMOND REPORT

May 15, 2024  
IGI Report Number LG633427988  
Description LABORATORY GROWN DIAMOND  
Shape and Cutting Style ROUND BRILLIANT  
Measurements 9.34 - 9.36 X 5.68 MM

GRADING RESULTS

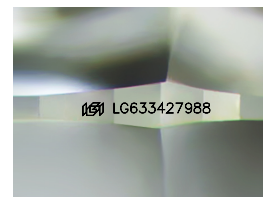
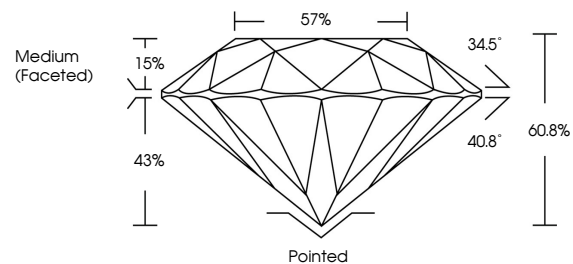
Carat Weight 3.03 CARATS  
Color Grade G  
Clarity Grade INTERNALLY FLAWLESS  
Cut Grade IDEAL

ADDITIONAL GRADING INFORMATION

Polish EXCELLENT  
Symmetry EXCELLENT  
Fluorescence NONE  
Inscription(s) IGI LG633427988

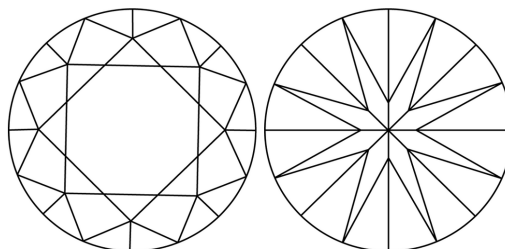
Comments: HEARTS & ARROWS  
As Grown - No indication of post-growth treatment.  
This Laboratory Grown Diamond was created by High Pressure High Temperature (HPHT) growth process.  
Type II

PROPORTIONS



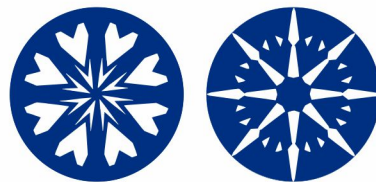
Sample Image Used

CLARITY CHARACTERISTICS

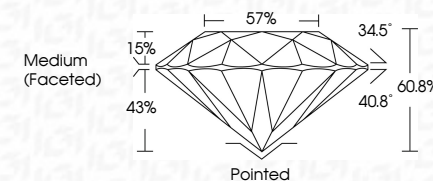


KEY TO SYMBOLS

Red symbols indicate internal characteristics.  
Green symbols indicate external characteristics.



May 15, 2024  
IGI Report Number LG633427988  
Description LABORATORY GROWN DIAMOND  
Shape and Cutting Style ROUND BRILLIANT  
Measurements 9.34 - 9.36 X 5.68 MM  
GRADING RESULTS  
Carat Weight 3.03 CARATS  
Color Grade G  
Clarity Grade INTERNALLY FLAWLESS  
Cut Grade IDEAL



ADDITIONAL GRADING INFORMATION

Polish EXCELLENT  
Symmetry EXCELLENT  
Fluorescence NONE  
Inscription(s) IGI LG633427988  
Comments: HEARTS & ARROWS  
As Grown - No indication of post-growth treatment.  
This Laboratory Grown Diamond was created by High Pressure High Temperature (HPHT) growth process.  
Type II



IGI

COLOR

D E F G H I J Faint Very Light Light

CLARITY

IF VS 1-2 VS 1-2 SI 1-2 I 1-3  
Internally Flawless Very Very Slightly Included Very Slightly Included Slightly Included Included

May 15, 2024  
IGI Report No LG633427988  
ROUND BRILLIANT  
9.34 - 9.36 X 5.68 MM  
3.03 CARATS  
Color Grade G  
Clarity Grade IF  
Depth 60.8%  
Table 57%  
Girdle Medium (Faceted)  
Culet Pointed  
Polish EXCELLENT  
Symmetry EXCELLENT  
Fluorescence NONE  
Inscriptions(s) IGI LG633427988  
Comments: HEARTS & ARROWS  
As Grown - No indication of post-growth treatment.  
This Laboratory Grown Diamond was created by High Pressure High Temperature (HPHT) growth process.  
Type II