



ELECTRONIC COPY

LG633428595
Report verification at igi.org



May 14, 2024

IGI Report Number **LG633428595**

Description **LABORATORY GROWN DIAMOND**

Shape and Cutting Style **CUT CORNERED
RECTANGULAR MODIFIED
BRILLIANT**

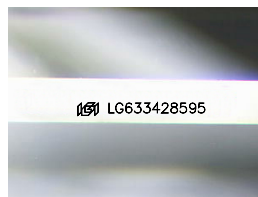
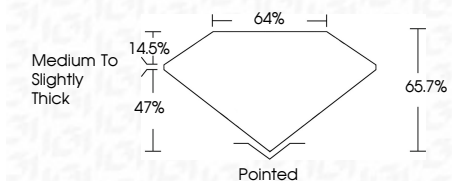
Measurements **9.83 X 6.82 X 4.48 MM**

GRADING RESULTS

Carat Weight **2.57 CARATS**

Color Grade **D**

Clarity Grade **INTERNALLY FLAWLESS**



Sample Image Used

ADDITIONAL GRADING INFORMATION

Polish **EXCELLENT**

Symmetry **EXCELLENT**

Fluorescence **NONE**

Inscription(s) **IGI LG633428595**

Comments: This Laboratory Grown Diamond was created by Chemical Vapor Deposition (CVD) growth process and may include post-growth treatment. Type IIa



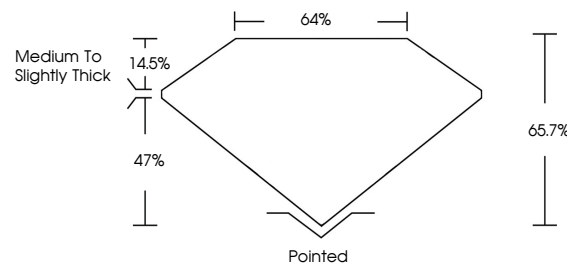
IGI

May 14, 2024
IGI Report No LG633428595
CUT CORNERED RECT. MODIFIED BRILLIANT
9.83 X 6.82 X 4.48 MM
2.57 CARATS
D
LF
65.7%
47%
14.5%
Medium to Slightly Thick
Pointed
EXCELLENT
EXCELLENT
NONE
IGI LG633428595

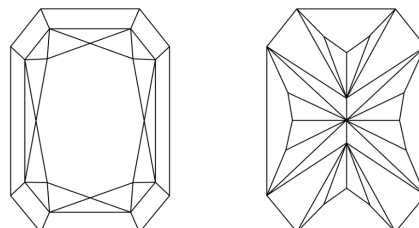
Comments: This Laboratory Grown Diamond was created by Chemical Vapor Deposition (CVD) growth process and may include post-growth treatment. Type IIa



PROPORTIONS



CLARITY CHARACTERISTICS



KEY TO SYMBOLS

Red symbols indicate internal characteristics.
Green symbols indicate external characteristics.

COLOR

D E F G H I J Faint Very Light Light

CLARITY

IF	VS ¹⁻²	VS ¹⁻²	SI ¹⁻²	I ¹⁻³
Internally Flawless	Very Very Slightly Included	Very Slightly Included	Slightly Included	Included

