



ELECTRONIC COPY

LG633430950
Report verification at igi.org



May 6, 2024

IGI Report Number **LG633430950**

Description **LABORATORY GROWN DIAMOND**

Shape and Cutting Style **CUT CORNERED
RECTANGULAR MODIFIED
BRILLIANT**

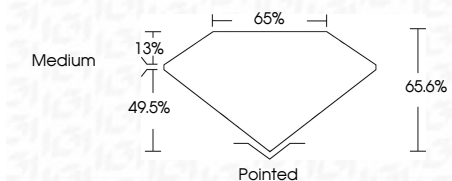
Measurements **12.36 X 8.50 X 5.58 MM**

GRADING RESULTS

Carat Weight **5.09 CARATS**

Color Grade **F**

Clarity Grade **VS 2**



ADDITIONAL GRADING INFORMATION

Polish **EXCELLENT**

Symmetry **EXCELLENT**

Fluorescence **NONE**

Inscription(s) **IGI LG633430950**

Comments: This Laboratory Grown Diamond was created by Chemical Vapor Deposition (CVD) growth process and may include post-growth treatment. Type IIa



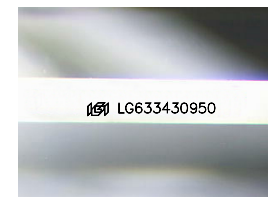
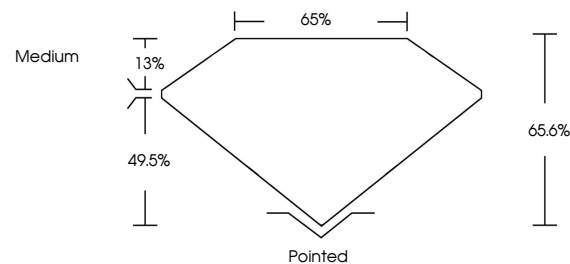
IGI

May 6, 2024
IGI Report No LG633430950
CUT CORNERED RECT. MODIFIED BRILLIANT
12.36 X 8.50 X 5.58 MM
5.09 CARATS
F
VS 2
65.6%
65%
Medium
Pointed
EXCELLENT
EXCELLENT
NONE
IGI LG633430950

Comments: This Laboratory Grown Diamond was created by Chemical Vapor Deposition (CVD) growth process and may include post-growth treatment. Type IIa

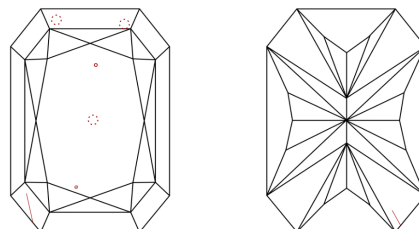


PROPORTIONS



Sample Image Used

CLARITY CHARACTERISTICS



KEY TO SYMBOLS

Red symbols indicate internal characteristics.
Green symbols indicate external characteristics.

COLOR

D E F G H I J Faint Very Light Light

CLARITY

IF	VS ¹⁻²	VS ¹⁻²	SI ¹⁻²	I ¹⁻³
Internally Flawless	Very Very Slightly Included	Very Slightly Included	Slightly Included	Included

