



ELECTRONIC COPY

LABORATORY GROWN DIAMOND REPORT

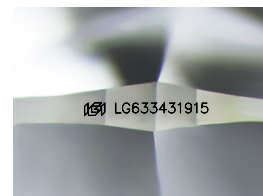
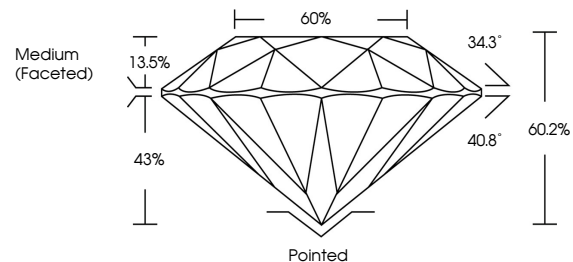
May 7, 2024
IGI Report Number LG633431915
Description LABORATORY GROWN DIAMOND
Shape and Cutting Style ROUND BRILLIANT
Measurements 8.17 - 8.20 X 4.93 MM
GRADING RESULTS
Carat Weight 2.03 CARATS
Color Grade D
Clarity Grade VS 1
Cut Grade IDEAL

ADDITIONAL GRADING INFORMATION

Polish EXCELLENT
Symmetry EXCELLENT
Fluorescence NONE
Inscription(s) LG633431915

Comments: HEARTS & ARROWS
This Laboratory Grown Diamond was created by Chemical Vapor Deposition (CVD) growth process and may include post-growth treatment.
Type IIa

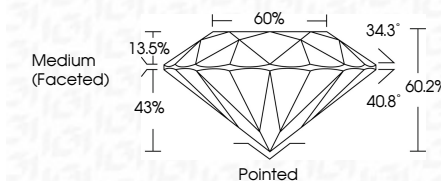
PROPORTIONS



Sample Image Used

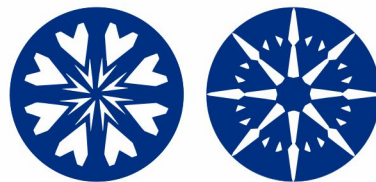


May 7, 2024
IGI Report Number LG633431915
Description LABORATORY GROWN DIAMOND
Shape and Cutting Style ROUND BRILLIANT
Measurements 8.17 - 8.20 X 4.93 MM
GRADING RESULTS
Carat Weight 2.03 CARATS
Color Grade D
Clarity Grade VS 1
Cut Grade IDEAL



ADDITIONAL GRADING INFORMATION

Polish EXCELLENT
Symmetry EXCELLENT
Fluorescence NONE
Inscription(s) LG633431915
Comments: HEARTS & ARROWS
This Laboratory Grown Diamond was created by Chemical Vapor Deposition (CVD) growth process and may include post-growth treatment.
Type IIa



Summary table with columns: May 7, 2024, IGI Report No LG633431915, ROUND BRILLIANT, 8.17 - 8.20 X 4.93 MM, 2.03 CARATS, D, VS 1, IDEAL, 60.2%, 60%, Medium (Faceted), Pointed, EXCELLENT, EXCELLENT, NONE, LG633431915

Comments: HEARTS & ARROWS
This Laboratory Grown Diamond was created by Chemical Vapor Deposition (CVD) growth process and may include post-growth treatment.
Type IIa