



**INTERNATIONAL  
GEMOLOGICAL  
INSTITUTE**

**ELECTRONIC COPY**

**LG633432033**



**May 7, 2024**

**IGI Report Number LG633432033**  
**ROUND BRILLIANT**  
**LABORATORY GROWN DIAMOND**  
**5.76 - 5.78 X 3.53 MM**

**Carat Weight 0.72 CARAT**  
**Color Grade D**  
**Clarity Grade VVS 1**  
**Cut Grade IDEAL**  
**Polish EXCELLENT**  
**Symmetry EXCELLENT**  
**Fluorescence NONE**  
**Inscription(s) IGI LG633432033**

**Comments: HEARTS & ARROWS** This Laboratory Grown Diamond was created by Chemical Vapor Deposition (CVD) growth process and may include post-growth treatment. Type Ila

**LABORATORY GROWN DIAMOND REPORT**

**May 7, 2024**  
**IGI Report Number LG633432033**  
**Description LABORATORY GROWN DIAMOND**  
**Shape and Cutting Style ROUND BRILLIANT**  
**Measurements 5.76 - 5.78 X 3.53 MM**

**GRADING RESULTS**

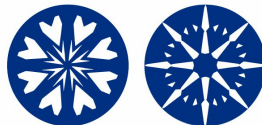
**Carat Weight 0.72 CARAT**  
**Color Grade D**  
**Clarity Grade VVS 1**  
**Cut Grade IDEAL**

**ADDITIONAL GRADING INFORMATION**

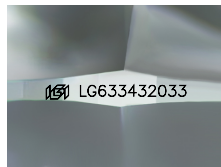
**Polish EXCELLENT**  
**Symmetry EXCELLENT**  
**Fluorescence NONE**  
**Inscription(s) IGI LG633432033**

**Comments: HEARTS & ARROWS**

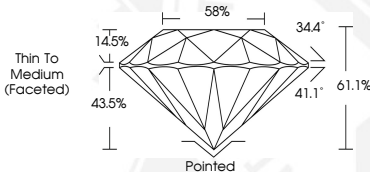
This Laboratory Grown Diamond was created by Chemical Vapor Deposition (CVD) growth process and may include post-growth treatment.  
Type Ila



**HEARTS & ARROWS**



Sample Image Used



**May 7, 2024**

**IGI Report Number LG633432033**  
**ROUND BRILLIANT**  
**LABORATORY GROWN DIAMOND**  
**5.76 - 5.78 X 3.53 MM**

**Carat Weight 0.72 CARAT**  
**Color Grade D**  
**Clarity Grade VVS 1**  
**Cut Grade IDEAL**  
**Polish EXCELLENT**  
**Symmetry EXCELLENT**  
**Fluorescence NONE**  
**Inscription(s) IGI LG633432033**

**Comments: HEARTS & ARROWS** This Laboratory Grown Diamond was created by Chemical Vapor Deposition (CVD) growth process and may include post-growth treatment. Type Ila

THIS DOCUMENT WAS PRODUCED WITH THE FOLLOWING SECURITY MEASURES: SPECIAL DOCUMENT PAPER, INK SCREENS, WATERMARK, BACKGROUND DESIGN, HOLOGRAM AND OTHER SECURITY FEATURES NOT LISTED AND DO EXCEED DOCUMENT SECURITY INDUSTRY GUIDELINES.

For terms & conditions and to verify this report, please visit [www.igi.org](http://www.igi.org)