

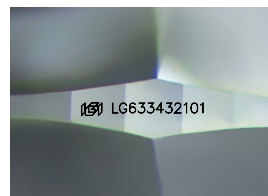
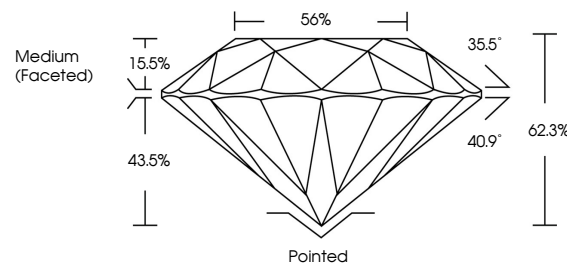


**ELECTRONIC COPY**

## LABORATORY GROWN DIAMOND REPORT

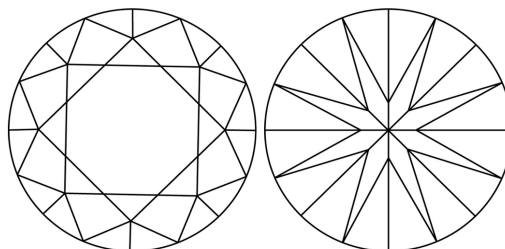
LG633432101  
Report verification at [igi.org](http://igi.org)

## PROPORTIONS



Sample Image Used

## CLARITY CHARACTERISTICS



### KEY TO SYMBOLS

Red symbols indicate internal characteristics.  
Green symbols indicate external characteristics.

**COLOR**

D E F G H I J Faint Very Light Light

## CLARITY

IF	VVS <sup>1-2</sup>	VS <sup>1-2</sup>	SI <sup>1-2</sup>	I <sup>1-3</sup>
Internally Flawless	Very Very Slightly Included	Very Slightly Included	Slightly Included	Included



© IGI 2020, International Gemological Institute

FD - 10 20

**www.igi.org**

## DIAMOND REPORT



May 14, 2024

IGI Report Number **LG633432101**Description **LABORATORY GROWN DIAMOND**Shape and Cutting Style **ROUND BRILLIANT**

Measurements 8.64 - 8.73 X 5.41 MM

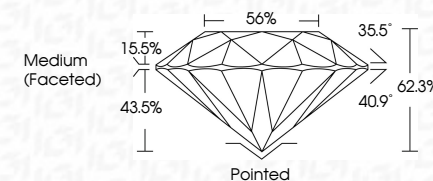
## GRADING RESULTS

Carat Weight 2.50 CARATS

Color Grade D

Clarity Grade **INTERNALLY FLAWLESS**

Cut Grade **IDEAL**



### ADDITIONAL GRADING INFORMATION

Polish **EXCELLENT**Symmetry **EXCELLENT**Fluorescence **NONE**Inscription(s)  LG633432107

Comments: As Grown - No indication of post-growth treatment.

This Laboratory Grown Diamond was created by High Pressure High Temperature (HPHT) growth process.

Type II



May 14, 2024	Carat Weight	2.50 CARATS
GI Report No. LG533432101	Color Grade	D
ROUND BRILLIANT	Clarity Grade	IF
	Cut Grade	IDEAL
	Depth	62.3%
	Table	56%
	Girdle	Medium (Faceted)
	Culet	Pointed
	Polish	EXCELLENT
	Symmetry	EXCELLENT
	Fluorescence	NONE
	Description(s)	#59 LG533432101

Comments: As Grown - No indication of post-growth treatment.

Laboratory Grown Diamond was identified by High Pressure High Temperature (HPHT) growth process.