



ELECTRONIC COPY

LG633433915
Report verification at igi.org



May 14, 2024

IGI Report Number **LG633433915**

Description **LABORATORY GROWN DIAMOND**

Shape and Cutting Style **CUT CORNERED
RECTANGULAR MODIFIED
BRILLIANT**

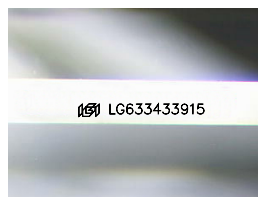
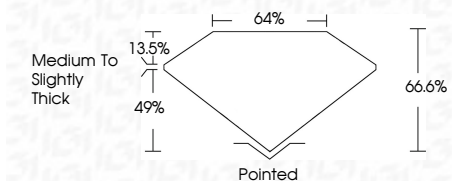
Measurements **8.71 X 6.04 X 4.02 MM**

GRADING RESULTS

Carat Weight **1.87 CARAT**

Color Grade **FANCY VIVID BLUE**

Clarity Grade **VS 1**



Sample Image Used

ADDITIONAL GRADING INFORMATION

Polish **EXCELLENT**

Symmetry **EXCELLENT**

Fluorescence **NONE**

Inscription(s) **IGI LG633433915**

Comments: This Laboratory Grown Diamond was created by Chemical Vapor Deposition (CVD) growth process. Indications of post-growth treatment.



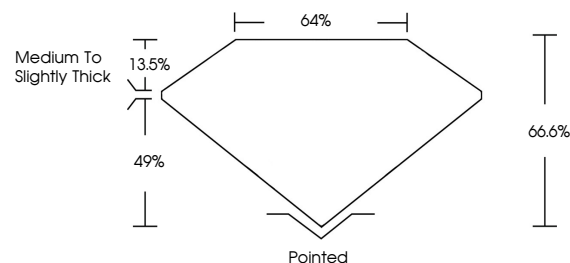
IGI

May 14, 2024
IGI Report No LG633433915
CUT CORNERED RECT. MODIFIED BRILLIANT
8.71 X 6.04 X 4.02 MM
Carat Weight 1.87 CARAT
Color Grade FANCY VIVID BLUE
Clarity Grade VS 1
Depth 66.6%
Table 49%
Girdle Medium to Slightly Thick
Culet Pointed
Polish EXCELLENT
Symmetry EXCELLENT
Fluorescence NONE
Inscription(s) IGI LG633433915

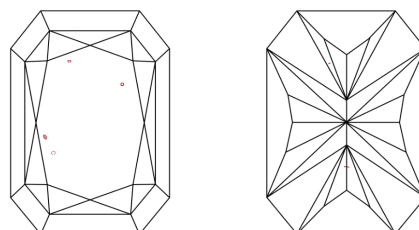
Comments: This Laboratory Grown Diamond was created by Chemical Vapor Deposition (CVD) growth process. Indications of post-growth treatment.



PROPORTIONS



CLARITY CHARACTERISTICS



KEY TO SYMBOLS

Red symbols indicate internal characteristics.
Green symbols indicate external characteristics.

COLOR

D E F G H I J Faint Very Light Light

CLARITY

IF	VS ¹⁻²	VS ¹⁻²	SI ¹⁻²	I ¹⁻³
Internally Flawless	Very Very Slightly Included	Very Slightly Included	Slightly Included	Included

