



**ELECTRONIC COPY**

LG633434980  
Report verification at [igi.org](http://igi.org)



May 8, 2024

IGI Report Number **LG633434980**

Description **LABORATORY GROWN DIAMOND**

Shape and Cutting Style **ROUND BRILLIANT**

Measurements **9.27 - 9.31 X 5.61 MM**

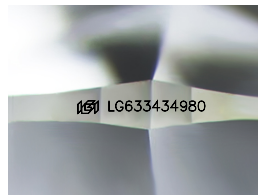
**GRADING RESULTS**

Carat Weight **3.04 CARATS**

Color Grade **F**

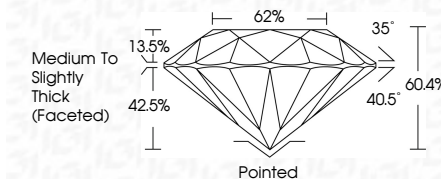
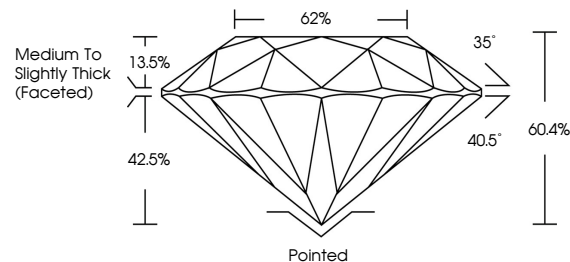
Clarity Grade **VS 2**

Cut Grade **EXCELLENT**



Sample Image Used

**PROPORTIONS**



**ADDITIONAL GRADING INFORMATION**

Polish **EXCELLENT**

Symmetry **EXCELLENT**

Fluorescence **NONE**

Inscription(s) **IGI LG633434980**

Comments: This Laboratory Grown Diamond was created by Chemical Vapor Deposition (CVD) growth process and may include post-growth treatment. Type IIa

**COLOR**

D E F G H I J Faint Very Light Light

**CLARITY**

IF VS 1-2 VS 1-2 SI 1-2 I 1-3

Internally Flawless Very Very Slightly Included Very Slightly Included Slightly Included Included



**IGI**



May 8, 2024  
IGI Report No LG633434980  
**ROUND BRILLIANT**  
9.27 - 9.31 X 5.61 MM  
3.04 CARATS  
Color Grade **F**  
Clarity Grade **VS 2**  
Depth **60.4%**  
Table **62%**  
Girdle **Medium To Slightly Thick (Faceted)**  
Culet **Pointed**  
Polish **EXCELLENT**  
Symmetry **EXCELLENT**  
Fluorescence **NONE**  
Inscriptions(s) **IGI LG633434980**

Comments: This Laboratory Grown Diamond was created by Chemical Vapor Deposition (CVD) growth process and may include post-growth treatment. Type IIa