



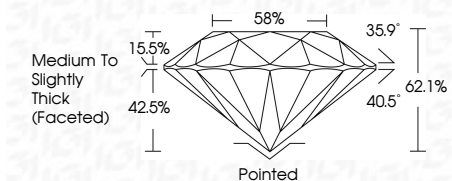
ELECTRONIC COPY

LG633438267 Report verification at igi.org



May 30, 2024 IGI Report Number LG633438267 Description LABORATORY GROWN DIAMOND Shape and Cutting Style ROUND BRILLIANT Measurements 8.04 - 8.08 X 5.00 MM

GRADING RESULTS Carat Weight 2.02 CARATS Color Grade E Clarity Grade VS 2 Cut Grade IDEAL



ADDITIONAL GRADING INFORMATION Polish EXCELLENT Symmetry EXCELLENT Fluorescence NONE Inscription(s) IGI LG633438267 Comments: As Grown - No indication of post-growth treatment. This Laboratory Grown Diamond was created by High Pressure High Temperature (HPHT) growth process. Type II



May 30, 2024 IGI Report No LG633438267 ROUND BRILLIANT 2.02 CARATS E 8.04 - 8.08 X 5.00 MM VS 2 IDEAL 62.1% 58% Medium To Slightly Thick (Faceted) Pointed EXCELLENT EXCELLENT NONE IGI LG633438267

Comments: As Grown - No indication of post-growth treatment. This Laboratory Grown Diamond was created by High Pressure High Temperature (HPHT) growth process. Type II

LABORATORY GROWN DIAMOND REPORT

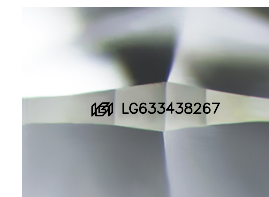
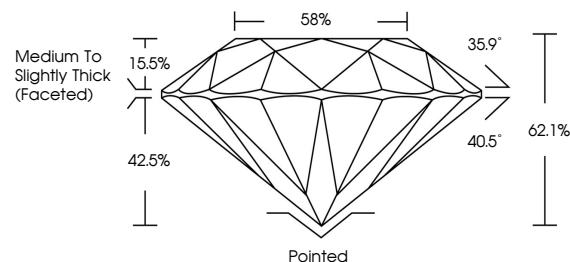
May 30, 2024 IGI Report Number LG633438267 Description LABORATORY GROWN DIAMOND Shape and Cutting Style ROUND BRILLIANT Measurements 8.04 - 8.08 X 5.00 MM

GRADING RESULTS Carat Weight 2.02 CARATS Color Grade E Clarity Grade VS 2 Cut Grade IDEAL

ADDITIONAL GRADING INFORMATION Polish EXCELLENT Symmetry EXCELLENT Fluorescence NONE Inscription(s) IGI LG633438267

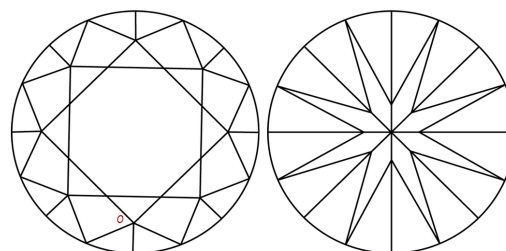
Comments: As Grown - No indication of post-growth treatment. This Laboratory Grown Diamond was created by High Pressure High Temperature (HPHT) growth process. Type II

PROPORTIONS



Sample Image Used

CLARITY CHARACTERISTICS



KEY TO SYMBOLS

Red symbols indicate internal characteristics. Green symbols indicate external characteristics.

COLOR

D E F G H I J Faint Very Light Light

CLARITY

IF VS 1-2 VS 1-2 SI 1-2 I 1-3 Internally Flawless Very Very Slightly Included Very Slightly Included Slightly Included Included

