



ELECTRONIC COPY

LG633440911
Report verification at igi.org



June 21, 2024

IGI Report Number LG633440911

Description LABORATORY GROWN DIAMOND

Shape and Cutting Style ROUND BRILLIANT

Measurements 6.58 - 6.60 X 4.09 MM

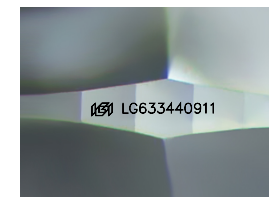
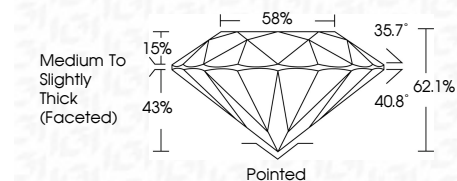
GRADING RESULTS

Carat Weight 1.10 CARAT

Color Grade D

Clarity Grade VVS 2

Cut Grade IDEAL



Sample Image Used

ADDITIONAL GRADING INFORMATION

Polish EXCELLENT

Symmetry EXCELLENT

Fluorescence NONE

Inscription(s) IGI LG633440911

Comments: As Grown - No indication of post-growth treatment.

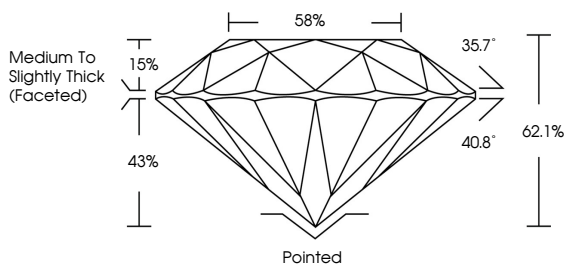
This Laboratory Grown Diamond was created by High Pressure High Temperature (HPHT) growth process.

Type II

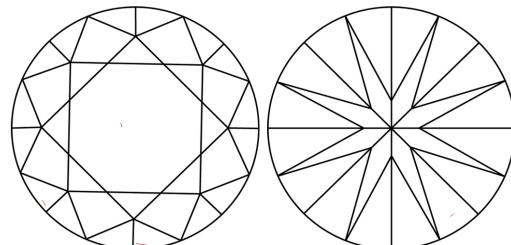


Table with 2 columns: Property and Value. Includes: June 21, 2024, IGI Report No. LG633440911, ROUND BRILLIANT, 6.58 - 6.60 X 4.09 MM, 1.10 CARAT, D, VVS 2, IDEAL, 62.1%, 88%, Medium To Slightly Thick (Faceted), Pointed, EXCELLENT, EXCELLENT, NONE, IGI LG633440911, Comments: As Grown - No indication of post-growth treatment. This Laboratory Grown Diamond was created by High Pressure High Temperature (HPHT) growth process. Type II

PROPORTIONS



CLARITY CHARACTERISTICS



KEY TO SYMBOLS

Red symbols indicate internal characteristics. Green symbols indicate external characteristics.

COLOR

Color scale table: D, E, F, G, H, I, J, Faint, Very Light, Light

CLARITY

Clarity scale table: IF, VVS 1-2, VS 1-2, SI 1-2, I 1-3, Internally Flawless, Very Very Slightly Included, Very Slightly Included, Slightly Included, Included

