



ELECTRONIC COPY

LG633446996
Report verification at igi.org



May 7, 2024

IGI Report Number **LG633446996**

Description **LABORATORY GROWN DIAMOND**

Shape and Cutting Style **ROUND BRILLIANT**

Measurements **8.67 - 8.72 X 5.25 MM**

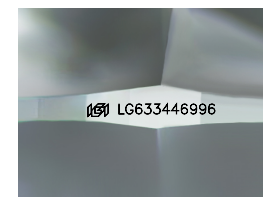
GRADING RESULTS

Carat Weight **2.41 CARATS**

Color Grade **F**

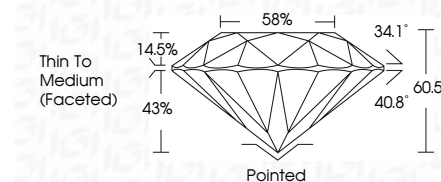
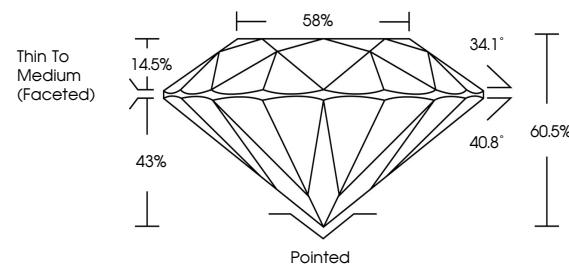
Clarity Grade **VVS 2**

Cut Grade **IDEAL**



Sample Image Used

PROPORTIONS



May 7, 2024

IGI Report Number **LG633446996**

Description **LABORATORY GROWN DIAMOND**

Shape and Cutting Style **ROUND BRILLIANT**

Measurements **8.67 - 8.72 X 5.25 MM**

GRADING RESULTS

Carat Weight **2.41 CARATS**

Color Grade **F**

Clarity Grade **VVS 2**

Cut Grade **IDEAL**

ADDITIONAL GRADING INFORMATION

Polish **EXCELLENT**

Symmetry **EXCELLENT**

Fluorescence **NONE**

Inscription(s) **LG633446996**

Comments: HEARTS & ARROWS

This Laboratory Grown Diamond was created by Chemical Vapor Deposition (CVD) growth process and may include post-growth treatment.

Type IIa

ADDITIONAL GRADING INFORMATION

Polish **EXCELLENT**

Symmetry **EXCELLENT**

Fluorescence **NONE**

Inscription(s) **LG633446996**

Comments: HEARTS & ARROWS

This Laboratory Grown Diamond was created by Chemical Vapor Deposition (CVD) growth process and may include post-growth treatment.

Type IIa

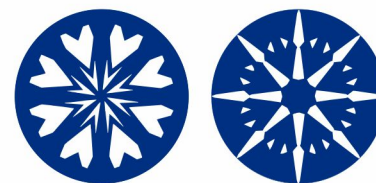
COLOR

D E F G H I J Faint Very Light Light

CLARITY

IF VS¹⁻² VS¹⁻² SI¹⁻² I¹⁻³

Internally Flawless Very Very Slightly Included Very Slightly Included Slightly Included Included



www.igi.org



IGI

May 7, 2024	IGI Report No LG633446996	2.41 CARATS	F	Pointed	EXCELLENT	EXCELLENT	NONE	LG633446996
ROUND BRILLIANT	8.67 - 8.72 X 5.25 MM	Color Grade	VVS 2	Thin To Medium (Faceted)	IDEAL	EXCELLENT	NONE	
		Carat Weight	60.5%	Cutler	60.5%	EXCELLENT	NONE	
		Color Grade	88%	Polish	88%	EXCELLENT	NONE	
		Clarity Grade	88%	Symmetry	88%	EXCELLENT	NONE	
		Cut Grade	88%	Fluorescence	88%	EXCELLENT	NONE	
		Table	88%	Inscription(s)	88%	EXCELLENT	NONE	
		Girdle	88%		88%	EXCELLENT	NONE	

Comments: HEARTS & ARROWS
This Laboratory Grown Diamond was created by Chemical Vapor Deposition (CVD) growth process and may include post-growth treatment.
Type IIa