



ELECTRONIC COPY

LABORATORY GROWN DIAMOND REPORT

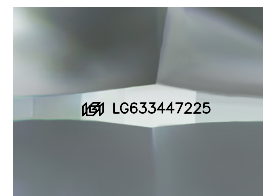
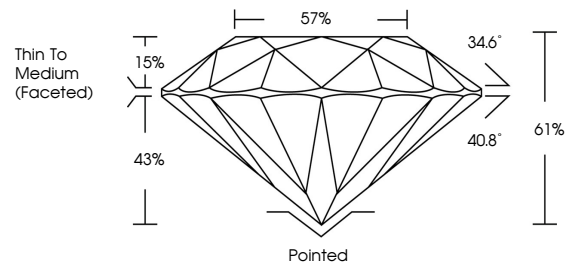
May 8, 2024  
IGI Report Number LG633447225  
Description LABORATORY GROWN DIAMOND  
Shape and Cutting Style ROUND BRILLIANT  
Measurements 8.16 - 8.20 X 4.99 MM  
**GRADING RESULTS**  
Carat Weight 2.03 CARATS  
Color Grade E  
Clarity Grade VVS 2  
Cut Grade IDEAL

ADDITIONAL GRADING INFORMATION

Polish EXCELLENT  
Symmetry EXCELLENT  
Fluorescence NONE  
Inscription(s) IGI LG633447225

Comments: HEARTS & ARROWS  
This Laboratory Grown Diamond was created by Chemical Vapor Deposition (CVD) growth process and may include post-growth treatment.  
Type IIa

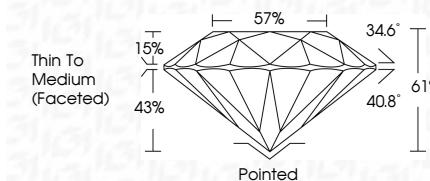
PROPORTIONS



Sample Image Used



May 8, 2024  
IGI Report Number LG633447225  
Description LABORATORY GROWN DIAMOND  
Shape and Cutting Style ROUND BRILLIANT  
Measurements 8.16 - 8.20 X 4.99 MM  
**GRADING RESULTS**  
Carat Weight 2.03 CARATS  
Color Grade E  
Clarity Grade VVS 2  
Cut Grade IDEAL



ADDITIONAL GRADING INFORMATION

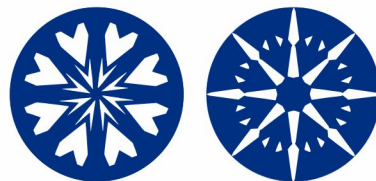
Polish EXCELLENT  
Symmetry EXCELLENT  
Fluorescence NONE  
Inscription(s) IGI LG633447225  
Comments: HEARTS & ARROWS  
This Laboratory Grown Diamond was created by Chemical Vapor Deposition (CVD) growth process and may include post-growth treatment.  
Type IIa

COLOR

D E F G H I J Faint Very Light Light

CLARITY

IF VVS 1-2 VS 1-2 SI 1-2 I 1-3  
Internally Flawless Very Very Slightly Included Very Slightly Included Slightly Included Included



IGI

May 8, 2024  
IGI Report No LG633447225  
ROUND BRILLIANT  
8.16 - 8.20 X 4.99 MM  
2.03 CARATS E  
Color Grade VVS 2  
Clarity Grade IDEAL  
Depth 61%  
Table 57%  
Girdle Thin To Medium (Faceted)  
Culet Pointed  
Polish EXCELLENT  
Symmetry EXCELLENT  
Fluorescence NONE  
Inscriptions(s) IGI LG633447225  
Comments: HEARTS & ARROWS  
This Laboratory Grown Diamond was created by Chemical Vapor Deposition (CVD) growth process and may include post-growth treatment.  
Type IIa