



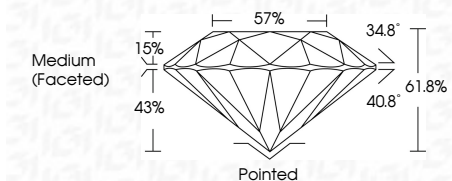
ELECTRONIC COPY

LG633447226 Report verification at igi.org



May 8, 2024 IGI Report Number LG633447226 Description LABORATORY GROWN DIAMOND Shape and Cutting Style ROUND BRILLIANT Measurements 6.66 - 6.71 X 4.13 MM

GRADING RESULTS Carat Weight 1.13 CARAT Color Grade D Clarity Grade VVS 2 Cut Grade IDEAL



ADDITIONAL GRADING INFORMATION Polish EXCELLENT Symmetry EXCELLENT Fluorescence NONE Inscription(s) LG633447226 Comments: HEARTS & ARROWS This Laboratory Grown Diamond was created by Chemical Vapor Deposition (CVD) growth process and may include post-growth treatment. Type IIa



May 8, 2024 IGI Report No LG633447226 ROUND BRILLIANT 6.66 - 6.71 X 4.13 MM 1.13 CARAT D VVS 2 IDEAL 6.66 61.8% 57% Medium (Faceted) Pointed EXCELLENT EXCELLENT NONE NONE LG633447226

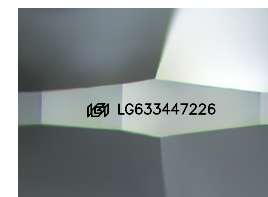
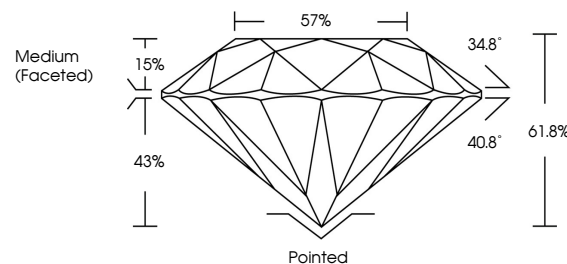
Comments: HEARTS & ARROWS This Laboratory Grown Diamond was created by Chemical Vapor Deposition (CVD) growth process and may include post-growth treatment. Type IIa

May 8, 2024 IGI Report Number LG633447226 Description LABORATORY GROWN DIAMOND Shape and Cutting Style ROUND BRILLIANT Measurements 6.66 - 6.71 X 4.13 MM GRADING RESULTS Carat Weight 1.13 CARAT Color Grade D Clarity Grade VVS 2 Cut Grade IDEAL

ADDITIONAL GRADING INFORMATION Polish EXCELLENT Symmetry EXCELLENT Fluorescence NONE Inscription(s) LG633447226

Comments: HEARTS & ARROWS This Laboratory Grown Diamond was created by Chemical Vapor Deposition (CVD) growth process and may include post-growth treatment. Type IIa

PROPORTIONS



Sample Image Used

COLOR

D E F G H I J Faint Very Light Light

CLARITY

IF VVS 1-2 VS 1-2 SI 1-2 I 1-3 Internally Flawless Very Very Slightly Included Very Slightly Included Slightly Included Included

