

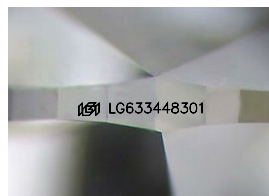
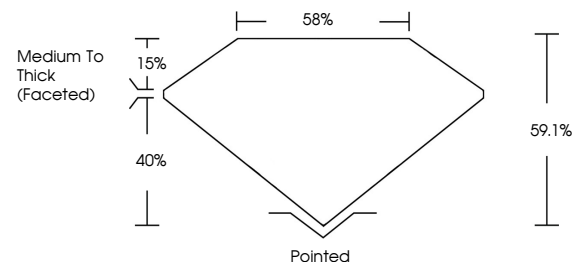


**ELECTRONIC COPY**

## LABORATORY GROWN DIAMOND REPORT

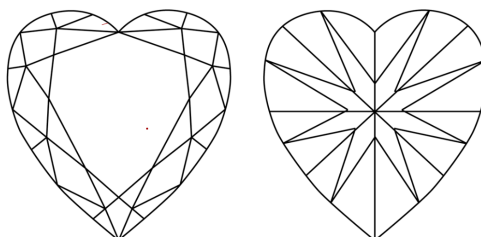
LG633448301  
Report verification at [igi.org](http://igi.org)

## PROPORTIONS



Sample Image Used

## CLARITY CHARACTERISTICS



### KEY TO SYMBOLS

Red symbols indicate internal characteristics.  
Green symbols indicate external characteristics.

## COLOR

D E F G H I J Faint Very Light Light

## CLARITY

IF	VVS <sup>1-2</sup>	VS <sup>1-2</sup>	SI <sup>1-2</sup>	I <sup>1-3</sup>
Internally Flawless	Very Very Slightly Included	Very Slightly Included	Slightly Included	Included



© IGI 2020, International Gemological Institute

FD - 10 20

**www.igi.org**

## DIAMOND REPORT



May 16, 2024

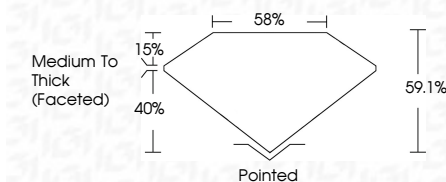
IGI Report Number **LG633448301**Description **LABORATORY GROWN DIAMOND**Shape and Cutting Style **HEART BRILLIANT**

Measurements 7.62 X 8.22 X 4.86 MM

## GRADING RESULTS

Carat Weight 1.78 CARAT

Color Grade

Clarity Grade WS 2

### ADDITIONAL GRADING INFORMATION

Polish **EXCELLENT**Symmetry **EXCELLENT**Fluorescence **NONE**Inscription(s)  LG633448307

Comments: This Laboratory Grown Diamond was created by Chemical Vapor Deposition (CVD) growth process and may include post-growth treatment.  
Type IIa



May 14, 2024	Report No. LG53346801	1.76 CARAT
HEART BRILLIANT		F
		VVS 2
		59%
		Medium to Thick (faced)
		Polished
		EXCELLENT
		EXCELLENT
		NONE
		lg53346801

Comments:

The Laboratory Grown Diamond was found to be a high quality diamond with no CVD growth process and may include post-growth treatment.

type IIG