



ELECTRONIC COPY

LABORATORY GROWN DIAMOND REPORT

May 9, 2024
IGI Report Number LG633448503
Description LABORATORY GROWN DIAMOND
Shape and Cutting Style PRINCESS CUT
Measurements 6.10 X 5.93 X 4.22 MM

GRADING RESULTS

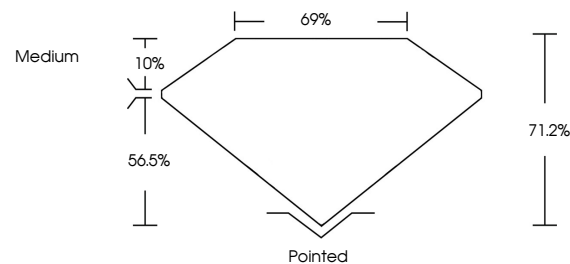
Carat Weight 1.31 CARAT
Color Grade G
Clarity Grade VVS 2

ADDITIONAL GRADING INFORMATION

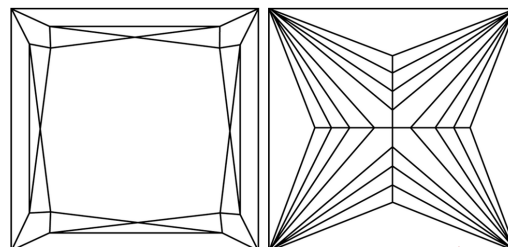
Polish EXCELLENT
Symmetry EXCELLENT
Fluorescence NONE
Inscription(s) LG633448503

Comments: This Laboratory Grown Diamond was created by Chemical Vapor Deposition (CVD) growth process and may include post-growth treatment. Type IIa

PROPORTIONS

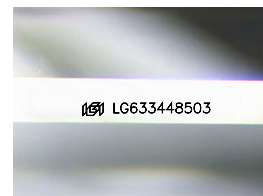


CLARITY CHARACTERISTICS



KEY TO SYMBOLS

Red symbols indicate internal characteristics.
Green symbols indicate external characteristics.



Sample Image Used

COLOR

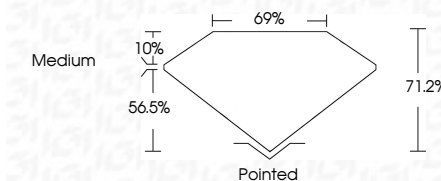
Color scale from D to J, with 'Faint' and 'Very Light' labels.

CLARITY

Clarity scale from IF to I1-3, with 'Internally Flawless' and 'Included' labels.



May 9, 2024
IGI Report Number LG633448503
Description LABORATORY GROWN DIAMOND
Shape and Cutting Style PRINCESS CUT
Measurements 6.10 X 5.93 X 4.22 MM
GRADING RESULTS
Carat Weight 1.31 CARAT
Color Grade G
Clarity Grade VVS 2



ADDITIONAL GRADING INFORMATION

Polish EXCELLENT
Symmetry EXCELLENT
Fluorescence NONE
Inscription(s) LG633448503
Comments: This Laboratory Grown Diamond was created by Chemical Vapor Deposition (CVD) growth process and may include post-growth treatment. Type IIa



IGI



May 9, 2024
IGI Report No. LG633448503
PRINCESS CUT
1.31 CARAT G
6.10 X 5.93 X 4.22 MM
Color Grade VVS 2
Depth 71.2%
Table 69%
Girdle Medium
Culet Pointed
Polish EXCELLENT
Symmetry EXCELLENT
Fluorescence NONE
Inscription(s) LG633448503
Comments: This Laboratory Grown Diamond was created by Chemical Vapor Deposition (CVD) growth process and may include post-growth treatment. Type IIa