



**INTERNATIONAL  
GEMOLOGICAL  
INSTITUTE**

**ELECTRONIC COPY**

**LG633452948**



**May 22, 2024**

**IGI Report Number LG633452948**

**ROUND BRILLIANT  
LABORATORY GROWN DIAMOND**

**5.80 - 5.84 X 3.53 MM**

**Carat Weight 0.73 CARAT**

**Color Grade D**

**Clarity Grade VVS 1**

**Cut Grade IDEAL**

**Polish EXCELLENT**

**Symmetry EXCELLENT**

**Fluorescence NONE**

**Inscription(s) IGI LG633452948**

Comments: As Grown - No indication of post-growth treatment. This Laboratory Grown Diamond was created by High Pressure High Temperature (HPHT) growth process. Type II

**LABORATORY GROWN DIAMOND REPORT**

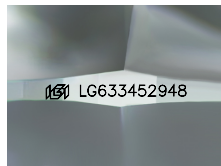
May 22, 2024

IGI Report Number **LG633452948**

Description **LABORATORY GROWN DIAMOND**

Shape and Cutting Style **ROUND BRILLIANT**

Measurements **5.80 - 5.84 X 3.53 MM**



Sample Image Used

**GRADING RESULTS**

Carat Weight **0.73 CARAT**

Color Grade **D**

Clarity Grade **VVS 1**

Cut Grade **IDEAL**

**ADDITIONAL GRADING INFORMATION**

Polish **EXCELLENT**

Symmetry **EXCELLENT**

Fluorescence **NONE**

Inscription(s) **IGI LG633452948**

Comments: As Grown - No indication of post-growth treatment. This Laboratory Grown Diamond was created by High Pressure High Temperature (HPHT) growth process. Type II



**May 22, 2024**

**IGI Report Number LG633452948**

**ROUND BRILLIANT  
LABORATORY GROWN DIAMOND**

**5.80 - 5.84 X 3.53 MM**

**Carat Weight 0.73 CARAT**

**Color Grade D**

**Clarity Grade VVS 1**

**Cut Grade IDEAL**

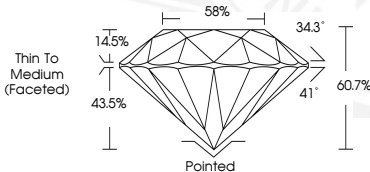
**Polish EXCELLENT**

**Symmetry EXCELLENT**

**Fluorescence NONE**

**Inscription(s) IGI LG633452948**

Comments: As Grown - No indication of post-growth treatment. This Laboratory Grown Diamond was created by High Pressure High Temperature (HPHT) growth process. Type II



THIS DOCUMENT WAS PRODUCED WITH THE FOLLOWING SECURITY MEASURES: SPECIAL DOCUMENT PAPER, INK SCREENS, WATERMARK, BACKGROUND DESIGNS, HOLOGRAM AND OTHER SECURITY FEATURES NOT LISTED AND DO EXCEED DOCUMENT SECURITY INDUSTRY GUIDELINES.

For terms & conditions and to verify this report, please visit [www.igi.org](http://www.igi.org)