



ELECTRONIC COPY

LABORATORY GROWN DIAMOND REPORT

May 9, 2024  
IGI Report Number **LG633463354**  
Description **LABORATORY GROWN DIAMOND**  
Shape and Cutting Style **SQUARE CUSHION BRILLIANT**  
Measurements **6.77 X 6.54 X 4.37 MM**

GRADING RESULTS

Carat Weight **1.81 CARAT**  
Color Grade **FANCY VIVID PINK**  
Clarity Grade **VS 1**

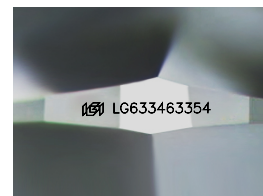
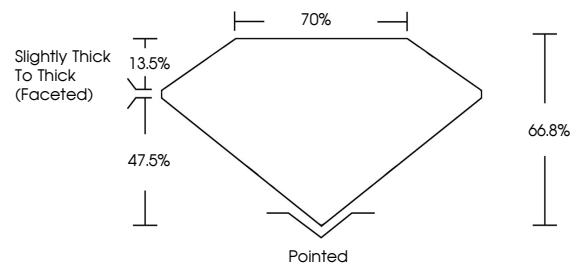
ADDITIONAL GRADING INFORMATION

Polish **VERY GOOD**  
Symmetry **VERY GOOD**  
Fluorescence **SLIGHT**  
Inscription(s) **IGI LG633463354**

Comments: This Laboratory Grown Diamond was created by Chemical Vapor Deposition (CVD) growth process.  
Indications of post-growth treatment.

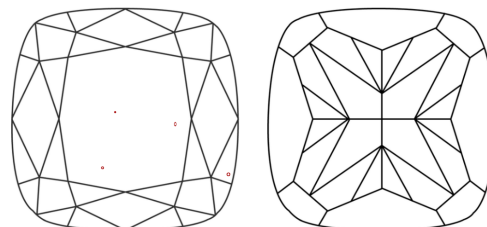
Secondary color: Brown

PROPORTIONS



Sample Image Used

CLARITY CHARACTERISTICS



KEY TO SYMBOLS

Red symbols indicate internal characteristics.  
Green symbols indicate external characteristics.

COLOR

D E F G H I J Faint Very Light Light

CLARITY

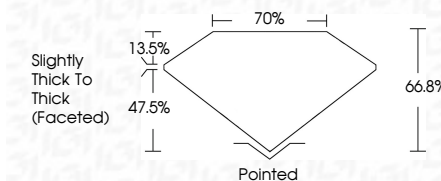
IF VS 1-2 VS 1-2 SI 1-2 I 1-3  
Internally Flawless Very Very Slightly Included Very Slightly Included Slightly Included Included



May 9, 2024  
IGI Report Number **LG633463354**  
Description **LABORATORY GROWN DIAMOND**  
Shape and Cutting Style **SQUARE CUSHION BRILLIANT**  
Measurements **6.77 X 6.54 X 4.37 MM**

GRADING RESULTS

Carat Weight **1.81 CARAT**  
Color Grade **FANCY VIVID PINK**  
Clarity Grade **VS 1**



ADDITIONAL GRADING INFORMATION

Polish **VERY GOOD**  
Symmetry **VERY GOOD**  
Fluorescence **SLIGHT**  
Inscription(s) **IGI LG633463354**

Comments: This Laboratory Grown Diamond was created by Chemical Vapor Deposition (CVD) growth process.  
Indications of post-growth treatment.

Secondary color: Brown



IGI



May 9, 2024  
IGI Report No **LG633463354**  
**SQUARE CUSHION BRILLIANT**  
6.77 X 6.54 X 4.37 MM  
1.81 CARAT  
FANCY VIVID PINK  
VS 1  
66.8%  
70%  
Slightly Thick To Thick (Faceted)  
Pointed  
VERY GOOD  
VERY GOOD  
SLIGHT  
IGI LG633463354

Comments: This Laboratory Grown Diamond was created by Chemical Vapor Deposition (CVD) growth process.  
Indications of post-growth treatment.  
Secondary color: Brown