



**ELECTRONIC COPY**

LG633464672  
Report verification at igi.org



May 8, 2024

IGI Report Number **LG633464672**

Description **LABORATORY GROWN DIAMOND**

Shape and Cutting Style **ROUND BRILLIANT**

Measurements **7.82 - 7.84 X 4.80 MM**

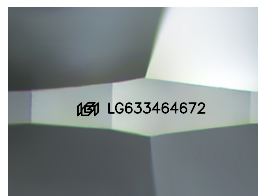
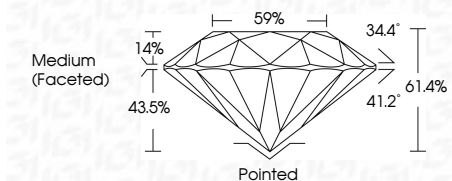
**GRADING RESULTS**

Carat Weight **1.82 CARAT**

Color Grade **E**

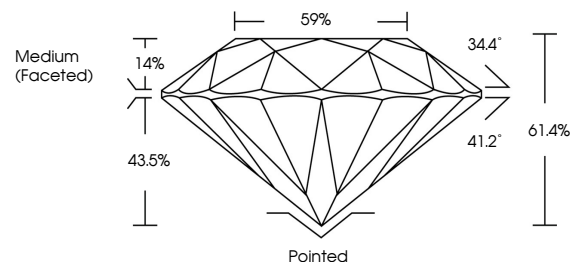
Clarity Grade **VVS 1**

Cut Grade **IDEAL**

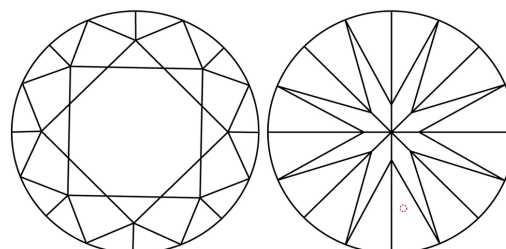


Sample Image Used

**PROPORTIONS**



**CLARITY CHARACTERISTICS**



**KEY TO SYMBOLS**

Red symbols indicate internal characteristics.  
Green symbols indicate external characteristics.

**COLOR**

D E F G H I J Faint Very Light Light

**CLARITY**

IF	VS <sup>1-2</sup>	VS <sup>1-2</sup>	SI <sup>1-2</sup>	I <sup>1-3</sup>
Internally Flawless	Very Very Slightly Included	Very Slightly Included	Slightly Included	Included

**ADDITIONAL GRADING INFORMATION**

Polish **EXCELLENT**

Symmetry **EXCELLENT**

Fluorescence **NONE**

Inscription(s) **IGI LG633464672**

Comments: As Grown - No indication of post-growth treatment.

This Laboratory Grown Diamond was created by High Pressure High Temperature (HPHT) growth process. Type II



**IGI**

May 8, 2024	IGI Report No LG633464672	1.82 CARAT	E	Pointed
ROUND BRILLIANT	7.82 - 7.84 X 4.80 MM	VVS 1	IDEAL	EXCELLENT
Color Grade	Clarity Grade	Depth	Table	Symmetry
		61.4%	59%	EXCELLENT
				FLUORESCENCE
				NONE
				INSCRIPTION(S)
				IGI LG633464672

Comments: As Grown - No indication of post-growth treatment. This Laboratory Grown Diamond was created by High Pressure High Temperature (HPHT) growth process. Type II